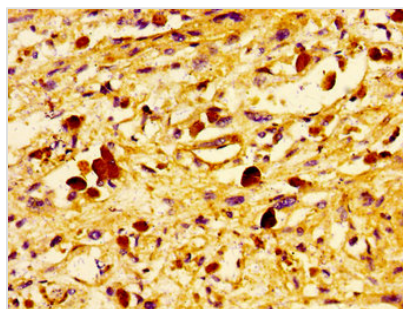




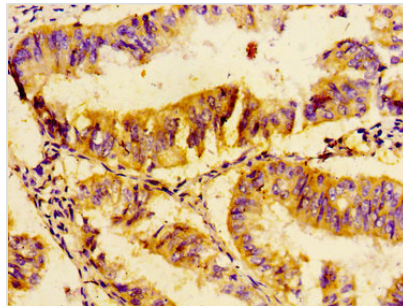
# UBE2D2 Antibody

<b>Product Code</b>	CSB-PA025444LA01HU
<b>Storage</b>	Upon receipt, store at -20°C or -80°C. Avoid repeated freeze.
<b>Uniprot No.</b>	P62837
<b>Immunogen</b>	Recombinant Human Ubiquitin-conjugating enzyme E2 D2 protein (1-147AA)
<b>Raised In</b>	Rabbit
<b>Species Reactivity</b>	Human
<b>Tested Applications</b>	ELISA, IHC, IF; Recommended dilution: IHC:1:20-1:200, IF:1:50-1:200
<b>Form</b>	Liquid
<b>Conjugate</b>	Non-conjugated
<b>Storage Buffer</b>	Preservative: 0.03% Proclin 300 Constituents: 50% Glycerol, 0.01M PBS, pH 7.4
<b>Purification Method</b>	>95%, Protein G purified
<b>Isotype</b>	IgG
<b>Clonality</b>	Polyclonal
<b>Alias</b>	Ubiquitin-conjugating enzyme E2 D2 (EC 2.3.2.23) ((E3-independent) E2 ubiquitin-conjugating enzyme D2) (EC 2.3.2.24) (E2 ubiquitin-conjugating enzyme D2) (Ubiquitin carrier protein D2) (Ubiquitin-conjugating enzyme E2(17)KB 2) (Ubiquitin-conjugating enzyme E2-17 kDa 2) (Ubiquitin-protein ligase D2) (p53-regulated ubiquitin-conjugating enzyme 1), UBE2D2, PUBC1 UBC4 UBC5B UBCH4 UBCH5B
<b>Immunogen Species</b>	Homo sapiens (Human)
<b>Research Area</b>	Epigenetics and Nuclear Signaling
<b>Target Names</b>	UBE2D2

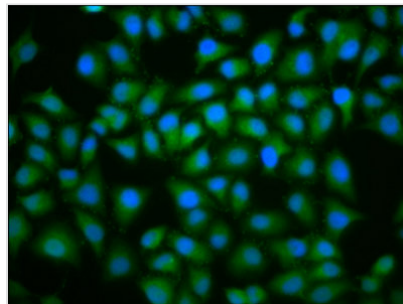
## Image



Immunohistochemistry of paraffin-embedded human melanoma using CSB-PA025444LA01HU at dilution of 1:100



Immunohistochemistry of paraffin-embedded human endometrial cancer using CSB-PA025444LA01HU at dilution of 1:100



Immunofluorescence staining of HeLa cells with CSB-PA025444LA01HU at 1:100, counter-stained with DAPI. The cells were fixed in 4% formaldehyde, permeabilized using 0.2% Triton X-100 and blocked in 10% normal Goat Serum. The cells were then incubated with the antibody overnight at 4°C. The secondary antibody was Alexa Fluor 488-conjugated AffiniPure Goat Anti-Rabbit IgG(H+L).