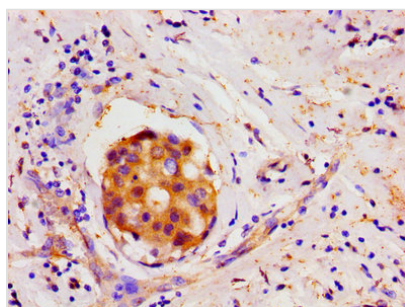




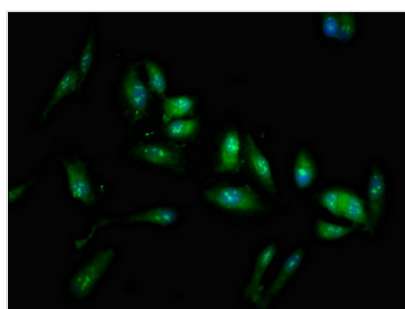
LIN28A Antibody

Product Code	CSB-PA13619A0Rb
Storage	Upon receipt, store at -20°C or -80°C. Avoid repeated freeze.
Uniprot No.	Q9H9Z2
Immunogen	Recombinant Human Protein lin-28 homolog A protein (1-209AA)
Raised In	Rabbit
Species Reactivity	Human
Tested Applications	ELISA, IHC, IF; Recommended dilution: IHC:1:20-1:200, IF:1:50-1:200
Form	Liquid
Conjugate	Non-conjugated
Storage Buffer	Preservative: 0.03% Proclin 300 Constituents: 50% Glycerol, 0.01M PBS, pH 7.4
Purification Method	>95%, Protein G purified
Isotype	IgG
Clonality	Polyclonal
Alias	Protein lin-28 homolog A (Lin-28A) (Zinc finger CCHC domain-containing protein 1), LIN28A, CSDD1 LIN28 ZCCHC1
Immunogen Species	Homo sapiens (Human)
Research Area	Neuroscience
Target Names	LIN28A

Image



Immunohistochemistry of paraffin-embedded human breast cancer using CSB-PA13619A0Rb at dilution of 1:100



Immunofluorescent analysis of HeLa cells using CSB-PA13619A0Rb at dilution of 1:100 and Alexa Fluor 488-conjugated AffiniPure Goat Anti-Rabbit IgG(H+L)



Usage

For Research Use Only. Not for use in diagnostic or therapeutic procedures.