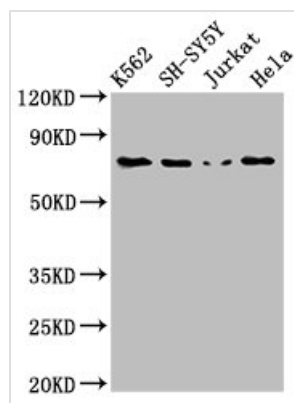




PRKCB Antibody

Product Code	CSB-PA15849A0Rb
Storage	Upon receipt, store at -20°C or -80°C. Avoid repeated freeze.
Uniprot No.	P05771
Immunogen	Recombinant Human Protein kinase C beta type protein (517-643AA)
Raised In	Rabbit
Species Reactivity	Human, Rat
Tested Applications	ELISA, WB, IHC, IF; Recommended dilution: WB:1:500-1:5000, IHC:1:20-1:200, IF:1:50-1:200
Form	Liquid
Conjugate	Non-conjugated
Storage Buffer	Preservative: 0.03% Proclin 300 Constituents: 50% Glycerol, 0.01M PBS, pH 7.4
Purification Method	>95%, Protein G purified
Isotype	IgG
Clonality	Polyclonal
Alias	Protein kinase C beta type (PKC-B) (PKC-beta) (EC 2.7.11.13), PRKCB, PKCB PRKCB1
Immunogen Species	Homo sapiens (Human)
Research Area	Signal Transduction
Target Names	PRKCB

Image



Western Blot

Positive WB detected in: K562 whole cell lysate, SH-SY5Y whole cell lysate, Jurkat whole cell lysate, HeLa whole cell lysate

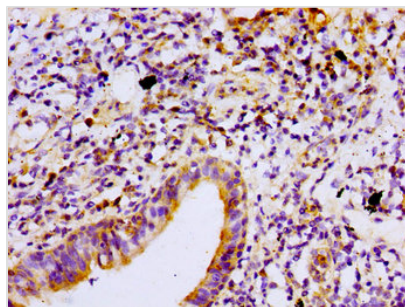
All lanes: PRKCB antibody at 3μg/ml

Secondary

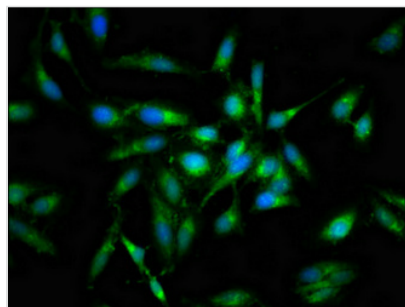
Goat polyclonal to rabbit IgG at 1/50000 dilution

Predicted band size: 77, 78 kDa

Observed band size: 77 kDa



Immunohistochemistry of paraffin-embedded human lung cancer using CSB-PA15849A0Rb at dilution of 1:100



Immunofluorescent analysis of Hela cells using CSB-PA15849A0Rb at dilution of 1:100 and Alexa Fluor 488-conjugated AffiniPure Goat Anti-Rabbit IgG(H+L)