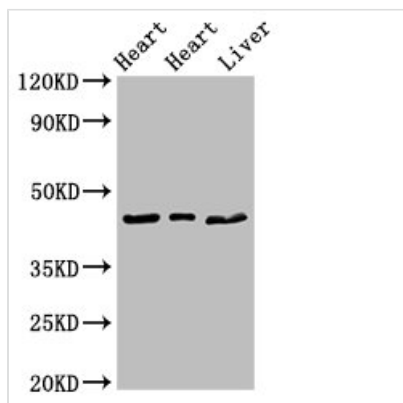




ECI2 Antibody

Product Code	CSB-PA527983LA01HU
Storage	Upon receipt, store at -20°C or -80°C. Avoid repeated freeze.
Uniprot No.	O75521
Immunogen	Recombinant Human Enoyl-CoA delta isomerase 2, mitochondrial protein (119-219AA)
Raised In	Rabbit
Species Reactivity	Human, Rat, Mouse
Tested Applications	ELISA, WB, IHC; Recommended dilution: WB:1:500-1:5000, IHC:1:20-1:200
Form	Liquid
Conjugate	Non-conjugated
Storage Buffer	Preservative: 0.03% Proclin 300 Constituents: 50% Glycerol, 0.01M PBS, pH 7.4
Purification Method	>95%, Protein G purified
Isotype	IgG
Clonality	Polyclonal
Alias	Enoyl-CoA delta isomerase 2, mitochondrial (EC 5.3.3.8) (DRS-1) (Delta(3),delta(2)-enoyl-CoA isomerase) (D3,D2-enoyl-CoA isomerase) (Diazepam-binding inhibitor-related protein 1) (DBI-related protein 1) (Dodecenoyl-CoA isomerase) (Hepatocellular carcinoma-associated antigen 88) (Peroxisomal 3,2-trans-enoyl-CoA isomerase) (pECI) (Renal carcinoma antigen NY-REN-1), ECI2, DRS1 HCA88 PECl
Immunogen Species	Homo sapiens (Human)
Research Area	Tags & Cell Markers
Target Names	ECI2

Image



Western Blot

Positive WB detected in: Rat heart tissue, Mouse heart tissue, Mouse liver tissue

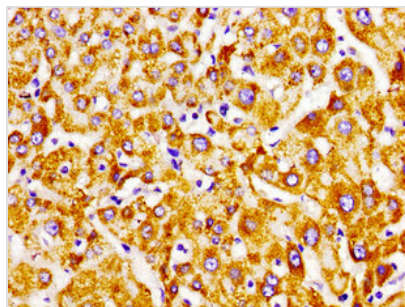
All lanes: ECI2 antibody at 2.7µg/ml

Secondary

Goat polyclonal to rabbit IgG at 1/50000 dilution

Predicted band size: 44, 40 kDa

Observed band size: 44 kDa



Immunohistochemistry of paraffin-embedded human liver tissue using CSB-PA527983LA01HU at dilution of 1:100

Usage

For Research Use Only. Not for use in diagnostic or therapeutic procedures.