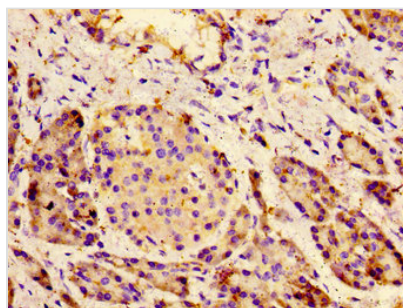




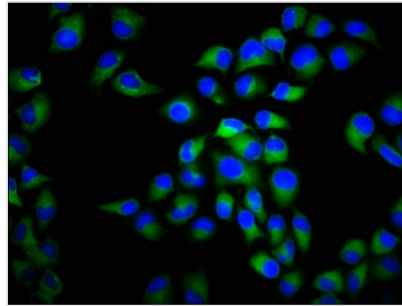
CACNA1C Antibody

Product Code	CSB-PA615724LA01HU
Storage	Upon receipt, store at -20°C or -80°C. Avoid repeated freeze.
Uniprot No.	Q13936
Immunogen	Recombinant Human Voltage-dependent L-type calcium channel subunit alpha-1C protein (1755-1971AA)
Raised In	Rabbit
Species Reactivity	Human
Tested Applications	ELISA, IHC, IF; Recommended dilution: IHC:1:20-1:200, IF:1:200-1:500
Form	Liquid
Conjugate	Non-conjugated
Storage Buffer	Preservative: 0.03% Proclin 300 Constituents: 50% Glycerol, 0.01M PBS, pH 7.4
Purification Method	>95%, Protein G purified
Isotype	IgG
Clonality	Polyclonal
Alias	Voltage-dependent L-type calcium channel subunit alpha-1C (Calcium channel, L type, alpha-1 polypeptide, isoform 1, cardiac muscle) (Voltage-gated calcium channel subunit alpha Cav1.2), CACNA1C, CACH2 CACN2 CACNL1A1 CCHL1A1
Immunogen Species	Homo sapiens (Human)
Research Area	Neuroscience
Target Names	CACNA1C

Image



Immunohistochemistry of paraffin-embedded human pancreatic tissue using CSB-PA615724LA01HU at dilution of 1:100



Immunofluorescence staining of HeLa cells with CSB-PA615724LA01HU at 1:266, counter-stained with DAPI. The cells were fixed in 4% formaldehyde, permeabilized using 0.2% Triton X-100 and blocked in 10% normal Goat Serum. The cells were then incubated with the antibody overnight at 4°C. The secondary antibody was Alexa Fluor 488-conjugated AffiniPure Goat Anti-Rabbit IgG(H+L).