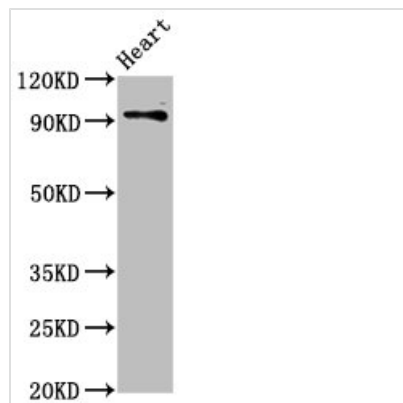




DLG2 Antibody

Product Code	CSB-PA621882LA01HU
Storage	Upon receipt, store at -20°C or -80°C. Avoid repeated freeze.
Uniprot No.	Q15700
Immunogen	Recombinant Human Disks large homolog 2 protein (310-420AA)
Raised In	Rabbit
Species Reactivity	Human, Rat
Tested Applications	ELISA, WB, IHC, IF; Recommended dilution: WB:1:500-1:5000, IHC:1:20-1:200, IF:1:200-1:500
Form	Liquid
Conjugate	Non-conjugated
Storage Buffer	Preservative: 0.03% Proclin 300 Constituents: 50% Glycerol, 0.01M PBS, pH 7.4
Purification Method	>95%, Protein G purified
Isotype	IgG
Clonality	Polyclonal
Alias	Disks large homolog 2 (Channel-associated protein of synapse-110) (Chapsyn-110) (Postsynaptic density protein PSD-93), DLG2
Immunogen Species	Homo sapiens (Human)
Research Area	Neuroscience
Target Names	DLG2

Image



Western Blot

Positive WB detected in: Rat heart tissue

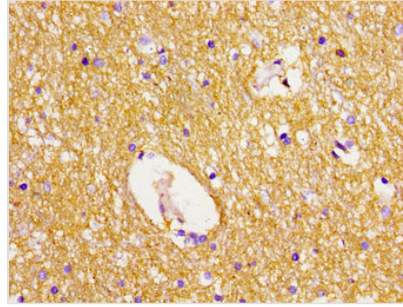
All lanes: DLG2 antibody at 2.8µg/ml

Secondary

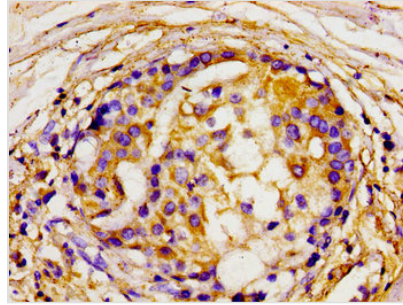
Goat polyclonal to rabbit IgG at 1/50000 dilution

Predicted band size: 98, 110, 84, 101, 39 kDa

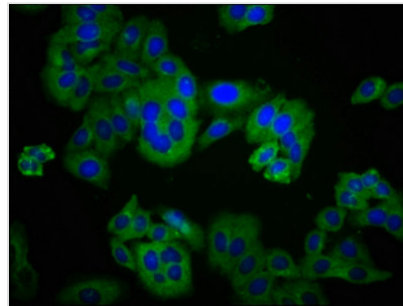
Observed band size: 98 kDa



Immunohistochemistry of paraffin-embedded human brain tissue using CSB-PA621882LA01HU at dilution of 1:100



Immunohistochemistry of paraffin-embedded human breast cancer using CSB-PA621882LA01HU at dilution of 1:100



Immunofluorescence staining of HepG2 cells with CSB-PA621882LA01HU at 1:233, counter-stained with DAPI. The cells were fixed in 4% formaldehyde, permeabilized using 0.2% Triton X-100 and blocked in 10% normal Goat Serum. The cells were then incubated with the antibody overnight at 4°C. The secondary antibody was Alexa Fluor 488-conjugated AffiniPure Goat Anti-Rabbit IgG(H+L).

Usage

For Research Use Only. Not for use in diagnostic or therapeutic procedures.