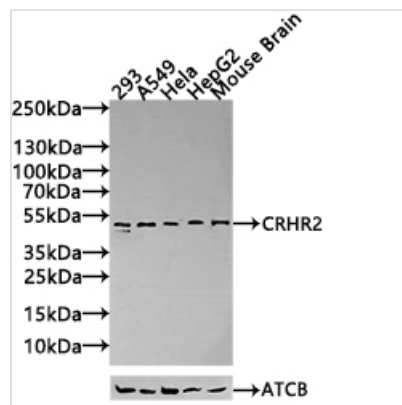




CRHR2 Antibody

Product Code	CSB-PA623797LA01HU
Storage	Upon receipt, store at -20°C or -80°C. Avoid repeated freeze.
Uniprot No.	Q13324
Immunogen	Recombinant Human Corticotropin-releasing factor receptor 2 protein
Raised In	Rabbit
Species Reactivity	Human, Mouse
Tested Applications	ELISA, WB, IF; Recommended dilution: WB:1:500-1:3000,IF:1:20-1:200
Form	Liquid
Storage Buffer	Preservative: 0.03% Proclin 300 Constituents: 50% Glycerol, 0.01M PBS, pH 7.4
Purification Method	Antigen affinity purification
Isotype	IgG
Clonality	Polyclonal
Product Type	Polyclonal Antibody
Immunogen Species	Homo sapiens (Human)
Research Area	Neuroscience
Target Names	CRHR2

Image

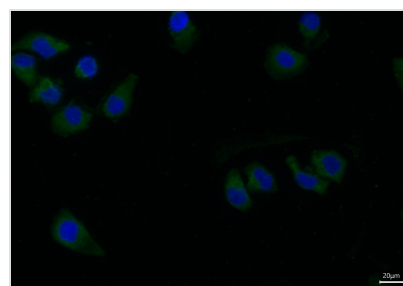


Western Blot

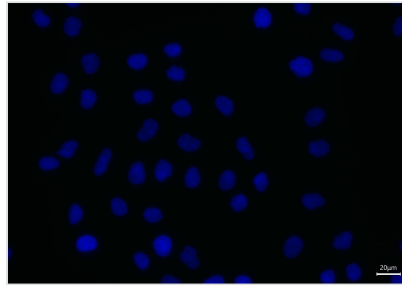
Positive WB detected in: 293 whole cell lysate(30µg), A549 whole cell lysate(30µg), HeLa whole cell lysate(30µg), HepG2 whole cell lysate(30µg), Mouse Brain tissue lysate(30µg)
All lanes: CRHR2 antibody at 1:1000

Secondary

Goat polyclonal to rabbit IgG at 1/40000 dilution
Predicted band size: 48,51,47,45,43 kDa
Observed band size: 48 kDa
Exposure time: 120s



Immunofluorescence staining of HeLa cell with CSB-PA623797LA01HU at 1:30, counter-stained with DAPI. The cells were fixed in 4% formaldehyde and blocked in 10% normal Goat Serum. The cells were then incubated with the antibody overnight at 4C. The secondary antibody was Alexa Fluor 488-conjugated AffiniPure Goat Anti-Rabbit IgG(H+L).



Immunofluorescence staining of HeLa cell with 5% goat serum, counter-stained with DAPI. The cells were fixed in 4% formaldehyde and blocked in 10% normal Goat Serum. The cells were then incubated with the antibody overnight at 4C. The secondary antibody was Alexa Fluor 488-conjugated AffiniPure Goat Anti-Rabbit IgG(H+L).

Usage

For Research Use Only. Not for use in diagnostic or therapeutic procedures.