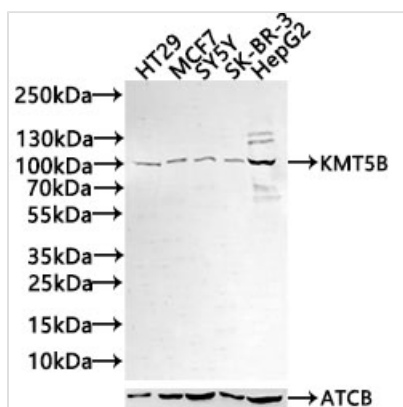




KMT5B Antibody

Product Code	CSB-PA674569LA01HU
Storage	Upon receipt, store at -20°C or -80°C. Avoid repeated freeze.
Uniprot No.	Q4FZB7
Immunogen	A synthetic peptide of human SUV420H1
Raised In	Rabbit
Species Reactivity	Human
Tested Applications	ELISA, WB, IHC, IF; Recommended dilution: WB:1:500-1:2000, IHC:1:50-1:200, IF:1:20-1:100
Form	Liquid
Storage Buffer	PBS with 50% glycerol, pH7.4.
Purification Method	Affinity purification
Isotype	IgG
Clonality	Polyclonal
Product Type	Polyclonal Antibody
Immunogen Species	Homo sapiens (Human)
Research Area	Signal Transduction
Target Names	KMT5B

Image

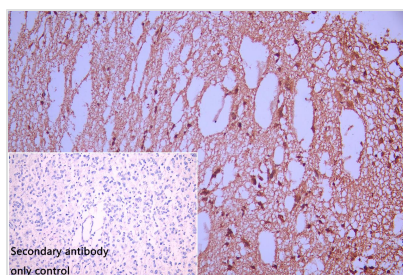


Western Blot

Positive WB detected in: HT29 whole cell lysate(30µg), MCF7 whole cell lysate(30µg), SY5Y whole cell lysate(30µg), SK-BR-3 whole cell lysate(30µg), HepG2 whole cell lysate(30µg)
All lanes: KMT5B antibody at 1:1000

Secondary

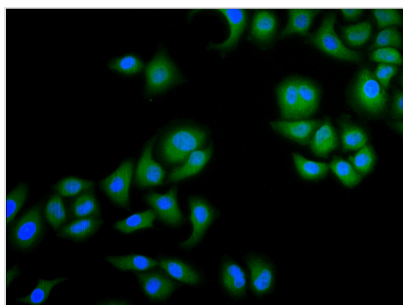
Goat polyclonal to rabbit IgG at 1/40000 dilution
Predicted band size: 100, 45,32 kDa
Observed band size: 100 kDa
Exposure time: 120s



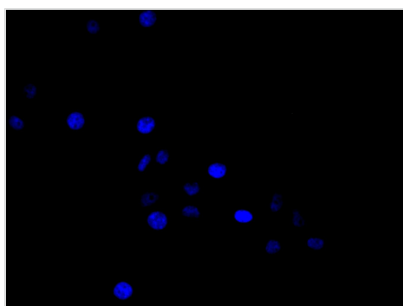
IHC image of CSB-PA674569LA01HU diluted at 1:100 and staining in paraffin-embedded human glioma cancer performed on a Leica Bond™ system. After dewaxing and hydration, antigen retrieval was mediated by high pressure in a citrate buffer (pH 6.0). Section was blocked with 10% normal goat serum 30min at RT. Then primary antibody (1% BSA) was incubated at 4°C overnight. The primary is detected by a Goat anti-rabbit polymer IgG labeled by HRP and visualized using 0.05% DAB. Secondary



antibody only control: uses 1% BSA instead of primary antibody



Immunofluorescence staining of HeLa cell with CSB-PA674569LA01HU at 1:30, counter-stained with DAPI. The cells were fixed in 4% formaldehyde and permeated by 0.2% TritonX-100 for 15 min. Then 10% normal goat serum to block non-specific protein-protein interactions. The cells were then incubated with the antibody overnight at 4°C. The secondary antibody was Alexa Fluor 488-conjugated AffiniPure Goat Anti-Rabbit IgG(H+L).



Immunofluorescence staining of HeLa cell with 5% goat serum, counter-stained with DAPI. The cells were fixed in 4% formaldehyde and blocked in 10% normal Goat Serum. The cells were then incubated with the antibody overnight at 4°C. The secondary antibody was Alexa Fluor 488-conjugated AffiniPure Goat Anti-Rabbit IgG(H+L).

Usage

For Research Use Only. Not for use in diagnostic or therapeutic procedures.