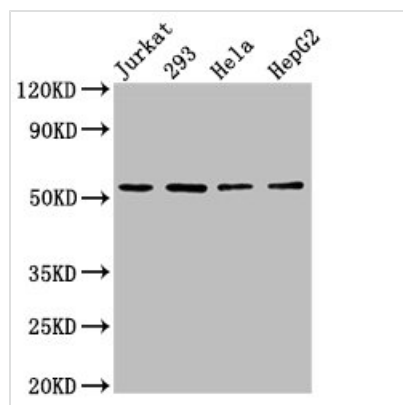




SLC16A12 Antibody

Product Code	CSB-PA757957LA01HU
Storage	Upon receipt, store at -20°C or -80°C. Avoid repeated freeze.
Uniprot No.	Q6ZSM3
Immunogen	Recombinant Human Monocarboxylate transporter 12 protein (431-486AA)
Raised In	Rabbit
Species Reactivity	Human
Tested Applications	ELISA, WB, IHC, IF; Recommended dilution: WB:1:500-1:5000, IHC:1:20-1:200, IF:1:200-1:500
Form	Liquid
Conjugate	Non-conjugated
Storage Buffer	Preservative: 0.03% Proclin 300 Constituents: 50% Glycerol, 0.01M PBS, pH 7.4
Purification Method	>95%, Protein G purified
Isotype	IgG
Clonality	Polyclonal
Alias	Monocarboxylate transporter 12 (MCT 12) (Creatine transporter 2) (CRT2) (Solute carrier family 16 member 12), SLC16A12, MCT12
Immunogen Species	Homo sapiens (Human)
Research Area	Signal Transduction
Target Names	SLC16A12

Image



Western Blot

Positive WB detected in: Jurkat whole cell lysate, 293 whole cell lysate, HeLa whole cell lysate, HepG2 whole cell lysate

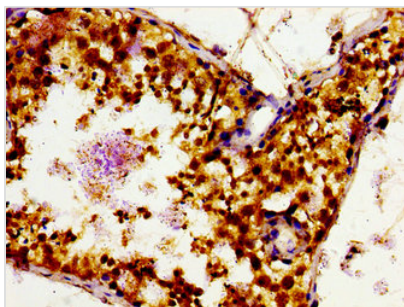
All lanes: SLC16A12 antibody at 3µg/ml

Secondary

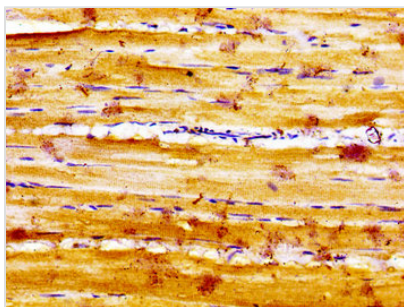
Goat polyclonal to rabbit IgG at 1/50000 dilution

Predicted band size: 54 kDa

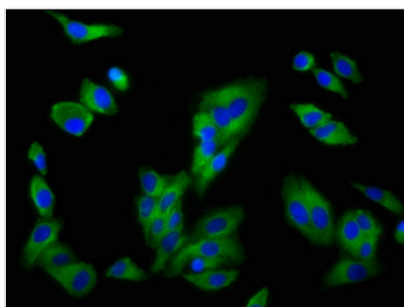
Observed band size: 54 kDa



Immunohistochemistry of paraffin-embedded human testis tissue using CSB-PA757957LA01HU at dilution of 1:100



Immunohistochemistry of paraffin-embedded human skeletal muscle tissue using CSB-PA757957LA01HU at dilution of 1:100



Immunofluorescence staining of HepG2 cells with CSB-PA757957LA01HU at 1:200, counter-stained with DAPI. The cells were fixed in 4% formaldehyde, permeabilized using 0.2% Triton X-100 and blocked in 10% normal Goat Serum. The cells were then incubated with the antibody overnight at 4°C. The secondary antibody was Alexa Fluor 488-conjugated AffiniPure Goat Anti-Rabbit IgG(H+L).

Usage

For Research Use Only. Not for use in diagnostic or therapeutic procedures.