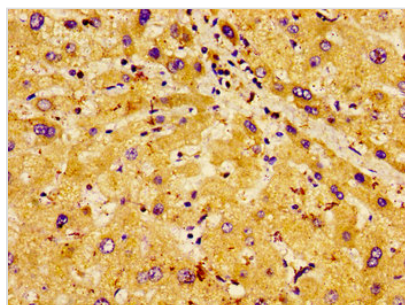




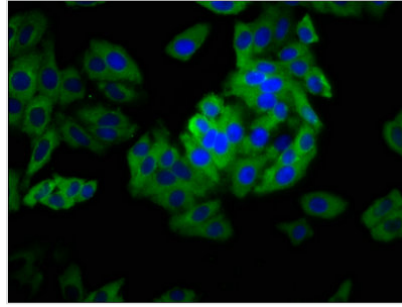
# PHLDA1 Antibody

<b>Product Code</b>	CSB-PA845148LA01HU
<b>Storage</b>	Upon receipt, store at -20°C or -80°C. Avoid repeated freeze.
<b>Uniprot No.</b>	Q8WV24
<b>Immunogen</b>	Recombinant Human Pleckstrin homology-like domain family A member 1 protein (1-138AA)
<b>Raised In</b>	Rabbit
<b>Species Reactivity</b>	Human
<b>Tested Applications</b>	ELISA, IHC, IF; Recommended dilution: IHC:1:20-1:200, IF:1:50-1:200
<b>Form</b>	Liquid
<b>Conjugate</b>	Non-conjugated
<b>Storage Buffer</b>	Preservative: 0.03% Proclin 300 Constituents: 50% Glycerol, 0.01M PBS, pH 7.4
<b>Purification Method</b>	>95%, Protein G purified
<b>Isotype</b>	IgG
<b>Clonality</b>	Polyclonal
<b>Alias</b>	Pleckstrin homology-like domain family A member 1 (Apoptosis-associated nuclear protein) (Proline- and glutamine-rich protein) (PQ-rich protein) (PQR protein) (Proline- and histidine-rich protein) (T-cell death-associated gene 51 protein), PHLDA1, PHRIP TDAG51
<b>Immunogen Species</b>	Homo sapiens (Human)
<b>Research Area</b>	Microbiology
<b>Target Names</b>	PHLDA1

## Image



Immunohistochemistry of paraffin-embedded human liver tissue using CSB-PA845148LA01HU at dilution of 1: 100



Immunofluorescence staining of HepG2 cells with CSB-PA845148LA01HU at 1: 133, counter-stained with DAPI. The cells were fixed in 4% formaldehyde, permeabilized tissue using 0.2% Triton X-100 and blocked in 10% normal Goat Serum. The cells were then incubated with the antibody overnight at 4°C. The secondary antibody was Alexa Fluor 488-conjugated AffiniPure Goat Anti-Rabbit IgG(H+L) .

## Usage

For Research Use Only. Not for use in diagnostic or therapeutic procedures.