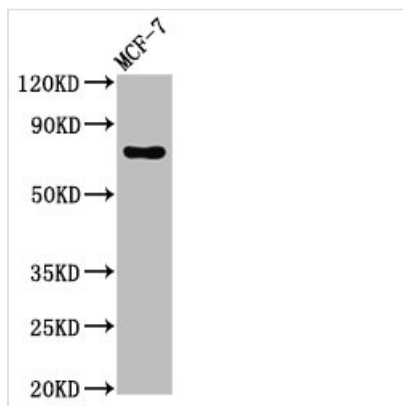




# TUBGCP4 Antibody

<b>Product Code</b>	CSB-PA871402LA01HU
<b>Storage</b>	Upon receipt, store at -20°C or -80°C. Avoid repeated freeze.
<b>Uniprot No.</b>	Q9UGJ1
<b>Immunogen</b>	Recombinant Human Gamma-tubulin complex component 4 protein (203-309AA)
<b>Raised In</b>	Rabbit
<b>Species Reactivity</b>	Human
<b>Tested Applications</b>	ELISA, WB, IHC, IF, IP; Recommended dilution: WB:1:500-1:5000, IHC:1:20-1:200, IF:1:200-1:500, IP:1:200-1:2000
<b>Form</b>	Liquid
<b>Conjugate</b>	Non-conjugated
<b>Storage Buffer</b>	Preservative: 0.03% Proclin 300 Constituents: 50% Glycerol, 0.01M PBS, pH 7.4
<b>Purification Method</b>	>95%, Protein G purified
<b>Isotype</b>	IgG
<b>Clonality</b>	Polyclonal
<b>Alias</b>	Gamma-tubulin complex component 4 (GCP-4) (hGCP4) (Gamma-ring complex protein 76 kDa) (h76p) (hGrip76), TUBGCP4, 76P GCP4
<b>Immunogen Species</b>	Homo sapiens (Human)
<b>Research Area</b>	Others
<b>Target Names</b>	TUBGCP4

## Image



### Western Blot

Positive WB detected in: MCF-7 whole cell lysate

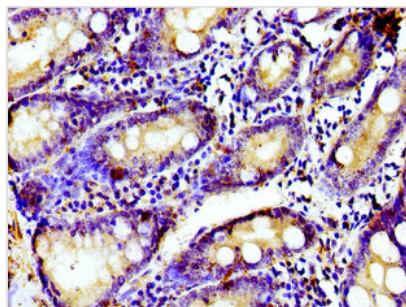
All lanes: TUBGCP4 antibody at 3µg/ml

Secondary

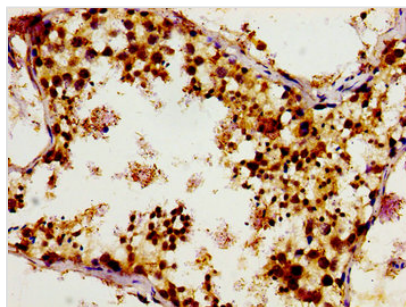
Goat polyclonal to rabbit IgG at 1/50000 dilution

Predicted band size: 77 kDa

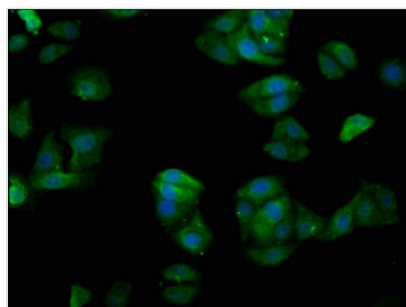
Observed band size: 77 kDa



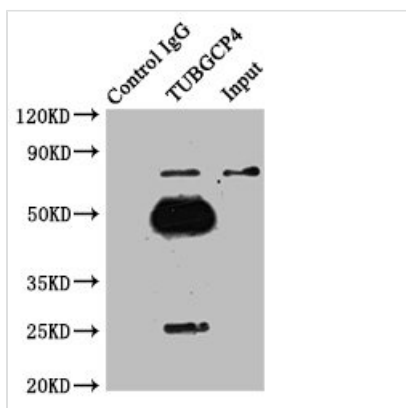
Immunohistochemistry of paraffin-embedded human small intestine tissue using CSB-PA871402LA01HU at dilution of 1:100



Immunohistochemistry of paraffin-embedded human testis tissue using CSB-PA871402LA01HU at dilution of 1:100



Immunofluorescence staining of HepG2 cells with CSB-PA871402LA01HU at 1:200, counter-stained with DAPI. The cells were fixed in 4% formaldehyde, permeabilized using 0.2% Triton X-100 and blocked in 10% normal Goat Serum. The cells were then incubated with the antibody overnight at 4°C. The secondary antibody was Alexa Fluor 488-conjugated AffiniPure Goat Anti-Rabbit IgG(H+L).



Immunoprecipitating TUBGCP4 in MCF-7 whole cell lysate

Lane 1: Rabbit control IgG instead of CSB-PA871402LA01HU in MCF-7 whole cell lysate. For western blotting, a HRP-conjugated Protein G antibody was used as the secondary antibody (1/2000)

Lane 2: CSB-PA871402LA01HU (8µg) + MCF-7 whole cell lysate (500µg)

Lane 3: MCF-7 whole cell lysate (10µg)

## Usage

For Research Use Only. Not for use in diagnostic or therapeutic procedures.