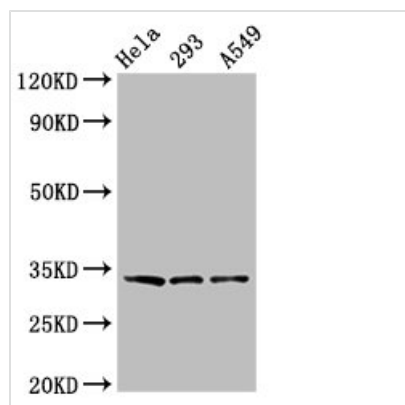




# GOLPH3 Antibody

<b>Product Code</b>	CSB-PA872494LA01HU
<b>Storage</b>	Upon receipt, store at -20°C or -80°C. Avoid repeated freeze.
<b>Uniprot No.</b>	Q9H4A6
<b>Immunogen</b>	Recombinant Human Golgi phosphoprotein 3 protein (16-150AA)
<b>Raised In</b>	Rabbit
<b>Species Reactivity</b>	Human
<b>Tested Applications</b>	ELISA, WB, IHC, IF, IP; Recommended dilution: WB:1:500-1:5000, IHC:1:20-1:200, IF:1:20-1:200, IP:1:200-1:2000
<b>Form</b>	Liquid
<b>Conjugate</b>	Non-conjugated
<b>Storage Buffer</b>	Preservative: 0.03% Proclin 300 Constituents: 50% Glycerol, 0.01M PBS, pH 7.4
<b>Purification Method</b>	>95%, Protein G purified
<b>Isotype</b>	IgG
<b>Clonality</b>	Polyclonal
<b>Alias</b>	Golgi phosphoprotein 3 (Coat protein GPP34) (Mitochondrial DNA absence factor) (MIDAS), GOLPH3, GPP34
<b>Immunogen Species</b>	Homo sapiens (Human)
<b>Research Area</b>	Tags & Cell Markers
<b>Target Names</b>	GOLPH3

## Image



### Western Blot

Positive WB detected in: HeLa whole cell lysate, 293 whole cell lysate, A549 whole cell lysate

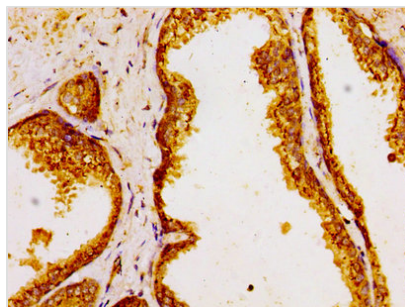
All lanes: GOLPH3 antibody at 3.2µg/ml

Secondary

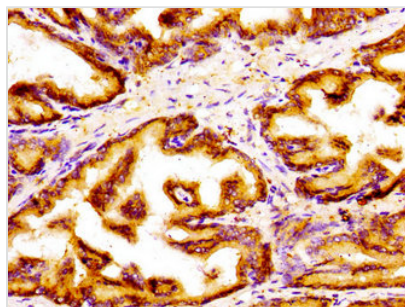
Goat polyclonal to rabbit IgG at 1/50000 dilution

Predicted band size: 34 kDa

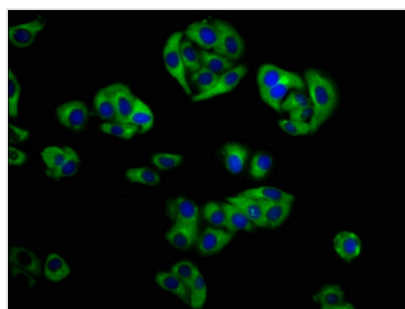
Observed band size: 34 kDa



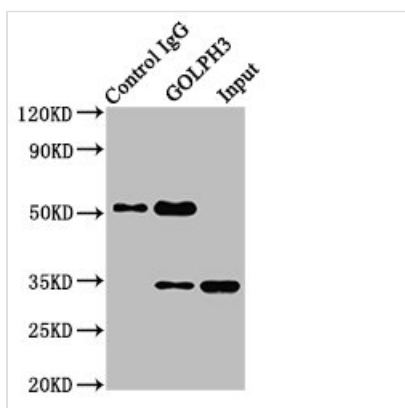
Immunohistochemistry of paraffin-embedded human prostate cancer using CSB-PA872494LA01HU at dilution of 1:100



Immunohistochemistry of paraffin-embedded human prostate tissue using CSB-PA872494LA01HU at dilution of 1:100



Immunofluorescence staining of HepG2 cells with CSB-PA872494LA01HU at 1:133, counter-stained with DAPI. The cells were fixed in 4% formaldehyde, permeabilized using 0.2% Triton X-100 and blocked in 10% normal Goat Serum. The cells were then incubated with the antibody overnight at 4°C. The secondary antibody was Alexa Fluor 488-conjugated AffiniPure Goat Anti-Rabbit IgG(H+L).



Immunoprecipitating GOLPH3 in Hela whole cell lysate

Lane 1: Rabbit control IgG instead of CSB-PA872494LA01HU in Hela whole cell lysate. For western blotting, a HRP-conjugated Protein G antibody was used as the secondary antibody (1/2000)

Lane 2: CSB-PA872494LA01HU (8μg) + Hela whole cell lysate (500μg)

Lane 3: Hela whole cell lysate (10μg)