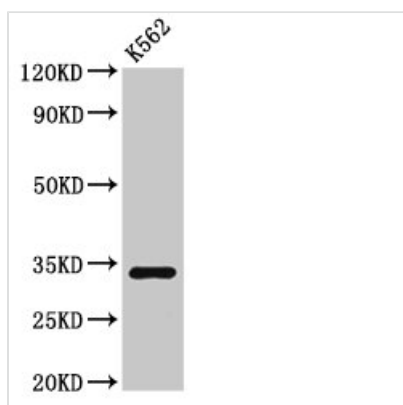




SET Antibody

Product Code	CSB-PA875345LA01HU
Storage	Upon receipt, store at -20°C or -80°C. Avoid repeated freeze.
Uniprot No.	Q01105
Immunogen	Recombinant Human Protein SET protein (147-235AA)
Raised In	Rabbit
Species Reactivity	Human
Tested Applications	ELISA, WB; Recommended dilution: WB:1:500-1:5000
Form	Liquid
Conjugate	Non-conjugated
Storage Buffer	Preservative: 0.03% Proclin 300 Constituents: 50% Glycerol, 0.01M PBS, pH 7.4
Purification Method	>95%, Protein G purified
Isotype	IgG
Clonality	Polyclonal
Alias	Protein SET (HLA-DR-associated protein II) (Inhibitor of granzyme A-activated DNase) (IGAAD) (PHAPII) (Phosphatase 2A inhibitor I2PP2A) (I-2PP2A) (Template-activating factor I) (TAF-I), SET
Immunogen Species	Homo sapiens (Human)
Research Area	Immunology
Target Names	SET

Image



Western Blot

Positive WB detected in: K562 whole cell lysate
 All lanes: SET antibody at 3µg/ml
 Secondary
 Goat polyclonal to rabbit IgG at 1/50000 dilution
 Predicted band size: 34, 33, 31, 32 kDa
 Observed band size: 34 kDa

Usage

For Research Use Only. Not for use in diagnostic or therapeutic procedures.