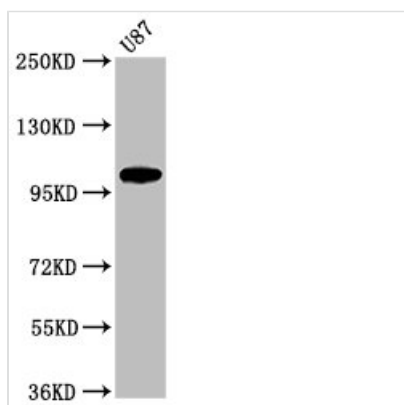




LGR6 Antibody

Product Code	CSB-PA884515LA01HU
Storage	Upon receipt, store at -20°C or -80°C. Avoid repeated freeze.
Uniprot No.	Q9HBX8
Immunogen	Recombinant Human Leucine-rich repeat-containing G-protein coupled receptor 6 protein (839-962AA)
Raised In	Rabbit
Species Reactivity	Human
Tested Applications	ELISA, WB, IHC; Recommended dilution: WB:1:500-1:5000, IHC:1:20-1:200
Form	Liquid
Conjugate	Non-conjugated
Storage Buffer	Preservative: 0.03% Proclin 300 Constituents: 50% Glycerol, 0.01M PBS, pH 7.4
Purification Method	>95%, Protein G purified
Isotype	IgG
Clonality	Polyclonal
Alias	Leucine-rich repeat-containing G-protein coupled receptor 6, LGR6
Immunogen Species	Homo sapiens (Human)
Research Area	Signal Transduction
Target Names	LGR6

Image



Western Blot

Positive WB detected in: U87 whole cell lysate

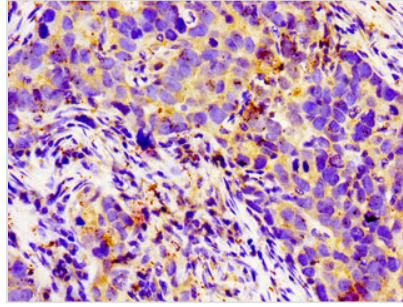
All lanes: LGR6 antibody at 2.5µg/ml

Secondary

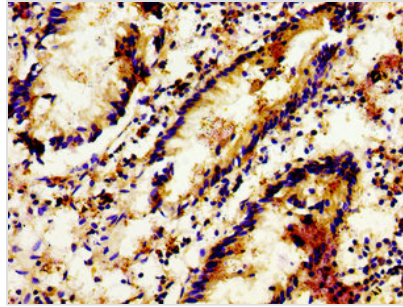
Goat polyclonal to rabbit IgG at 1/50000 dilution

Predicted band size: 105, 90, 100 kDa

Observed band size: 105 kDa



Immunohistochemistry of paraffin-embedded human pancreatic cancer using CSB-PA884515LA01HU at dilution of 1:100



Immunohistochemistry of paraffin-embedded human appendix tissue using CSB-PA884515LA01HU at dilution of 1:100

Usage

For Research Use Only. Not for use in diagnostic or therapeutic procedures.