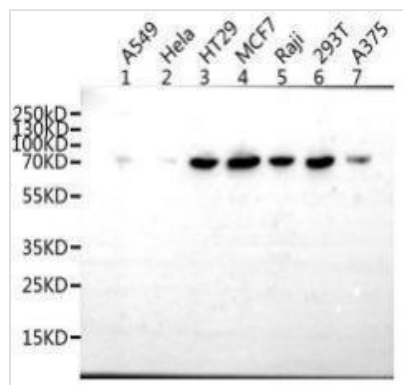




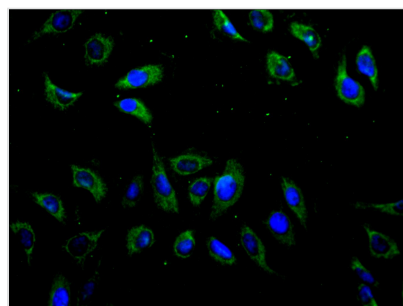
LAMP3 Antibody

Product Code	CSB-PA892177LA01HU
Storage	Upon receipt, store at -20°C or -80°C. Avoid repeated freeze.
Uniprot No.	Q9UQV4
Immunogen	Recombinant Human Lysosome-associated membrane glycoprotein 3 protein (28-224AA)
Raised In	Rabbit
Species Reactivity	Human
Tested Applications	ELISA, WB,IF; Recommended dilution: WB:1:1000-1:5000,IF:1:50-1:500
Form	Liquid
Storage Buffer	PBS with 0.02% sodium azide and 50% glycerol pH 7.3.
Purification Method	Antigen affinity purification
Isotype	IgG
Clonality	Polyclonal
Product Type	Polyclonal Antibody
Immunogen Species	Homo sapiens (Human)
Research Area	Tags & Cell Markers
Target Names	LAMP3

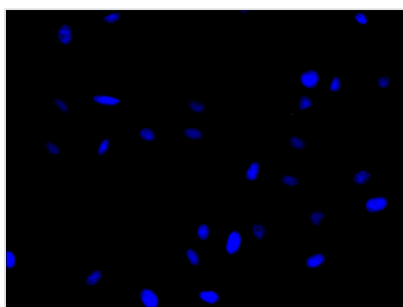
Image



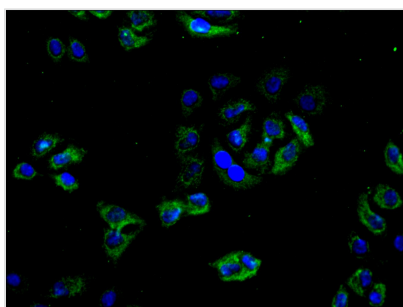
Western Blot Positive WB detected in: A549 whole cell lysate, HeLa whole cell lysate, HT29 whole cell lysate, MCF-7 whole cell lysate, Raji whole cell lysate, 293T whole cell lysate, A375 whole cell lysate
 All lanes: LAMP3 antibody at 1/1000 dilution
 Secondary Goat polyclonal to rabbit IgG at 1/50000 dilution
 Predicted band size: 45 kDa
 Observed band size: 70 kDa



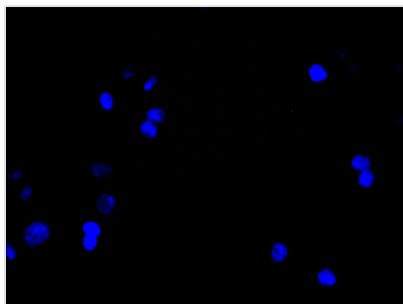
Immunofluorescence staining of A549 cell with CSB-PA892177LA01HU at 1:100, counter-stained with DAPI. The cells were fixed in 4% formaldehyde and blocked in 10% normal Goat Serum. The cells were then incubated with the antibody overnight at 4C. The secondary antibody was Alexa Fluor 488-conjugated AffiniPure Goat Anti-Rabbit IgG(H+L).



Immunofluorescence staining of A549 cell with 5% goat serum, counter-stained with DAPI. The cells were fixed in 4% formaldehyde and blocked in 10% normal Goat Serum. The cells were then incubated with the antibody overnight at 4C. The secondary antibody was Alexa Fluor 488-conjugated AffiniPure Goat Anti-Rabbit IgG(H+L).



Immunofluorescence staining of HeLa cell with CSB-PA892177LA01HU at 1:100, counter-stained with DAPI. The cells were fixed in 4% formaldehyde and blocked in 10% normal Goat Serum. The cells were then incubated with the antibody overnight at 4C. The secondary antibody was Alexa Fluor 488-conjugated AffiniPure Goat Anti-Rabbit IgG(H+L).



Immunofluorescence staining of HeLa cell with 5% goat serum, counter-stained with DAPI. The cells were fixed in 4% formaldehyde and blocked in 10% normal Goat Serum. The cells were then incubated with the antibody overnight at 4C. The secondary antibody was Alexa Fluor 488-conjugated AffiniPure Goat Anti-Rabbit IgG(H+L).

Usage

For Research Use Only. Not for use in diagnostic or therapeutic procedures.