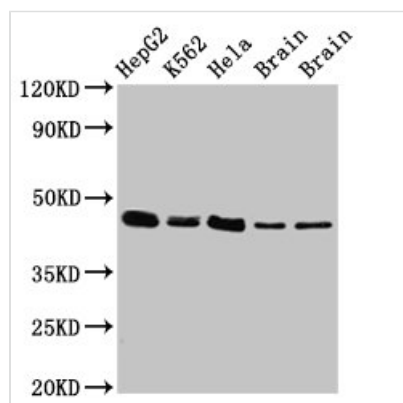




FLOT1 Antibody

Product Code	CSB-PA008727LA01HU
Storage	Upon receipt, store at -20°C or -80°C. Avoid repeated freeze.
Uniprot No.	O75955
Immunogen	Recombinant Human Flotillin-1 protein (169-251AA)
Raised In	Rabbit
Species Reactivity	Human, Rat, Mouse
Tested Applications	ELISA, WB, IHC, IF, IP; Recommended dilution: WB:1:500-1:5000, IHC:1:20-1:200, IF:1:50-1:200, IP:1:200-1:2000
Form	Liquid
Conjugate	Non-conjugated
Storage Buffer	Preservative: 0.03% Proclin 300 Constituents: 50% Glycerol, 0.01M PBS, pH 7.4
Purification Method	>95%, Protein G purified
Isotype	IgG
Clonality	Polyclonal
Alias	Flotillin-1, FLOT1
Immunogen Species	Homo sapiens (Human)
Research Area	Signal Transduction
Target Names	FLOT1

Image

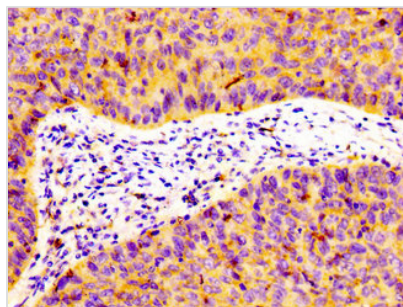


Western Blot

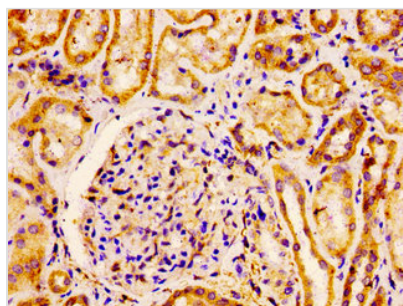
Positive WB detected in: HepG2 whole cell lysate, K562 whole cell lysate, HeLa whole cell lysate, Rat brain tissue, Mouse brain tissue
All lanes: FLOT1 antibody at 3µg/ml

Secondary

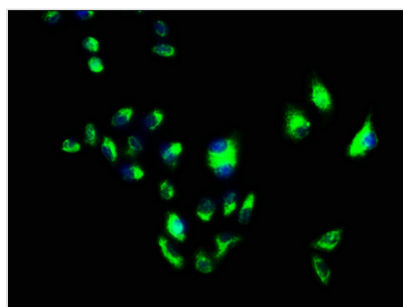
Goat polyclonal to rabbit IgG at 1/50000 dilution
Predicted band size: 48, 43 kDa
Observed band size: 48 kDa



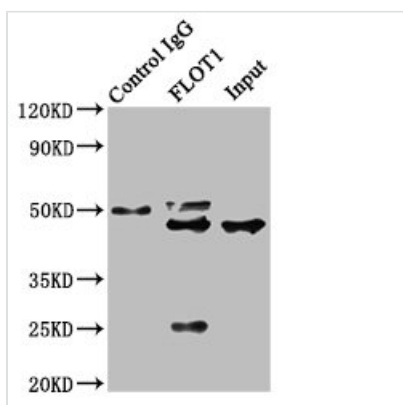
IHC image of CSB-PA008727LA01HU diluted at 1:100 and staining in paraffin-embedded human cervical cancer performed on a Leica BondTM system. After dewaxing and hydration, antigen retrieval was mediated by high pressure in a citrate buffer (pH 6.0). Section was blocked with 10% normal goat serum 30min at RT. Then primary antibody (1% BSA) was incubated at 4°C overnight. The primary is detected by a biotinylated secondary antibody and visualized using an HRP conjugated SP system.



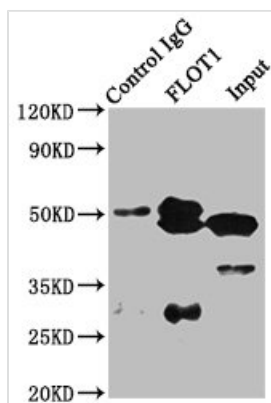
IHC image of CSB-PA008727LA01HU diluted at 1:100 and staining in paraffin-embedded human kidney tissue performed on a Leica BondTM system. After dewaxing and hydration, antigen retrieval was mediated by high pressure in a citrate buffer (pH 6.0). Section was blocked with 10% normal goat serum 30min at RT. Then primary antibody (1% BSA) was incubated at 4°C overnight. The primary is detected by a biotinylated secondary antibody and visualized using an HRP conjugated ABC system.



Immunofluorescence staining of HeLa cells with CSB-PA008727LA01HU at 1:100, counter-stained with DAPI. The cells were fixed in 4% formaldehyde, permeabilized using 0.2% Triton X-100 and blocked in 10% normal Goat Serum. The cells were then incubated with the antibody overnight at 4°C. The secondary antibody was Alexa Fluor 488-conjugated AffiniPure Goat Anti-Rabbit IgG(H+L).



Immunoprecipitating FLOT1 in HeLa whole cell lysate
 Lane 1: Rabbit control IgG instead of CSB-PA008727LA01HU in HeLa whole cell lysate. For western blotting, a HRP-conjugated Protein G antibody was used as the secondary antibody (1/2000)
 Lane 2: CSB-PA008727LA01HU (8μg) + HeLa whole cell lysate (500μg)
 Lane 3: HeLa whole cell lysate (10μg)



Immunoprecipitating FLOT1 in K562 whole cell lysate

Lane 1: Rabbit control IgG instead of CSB-PA008727LA01HU in K562 whole cell lysate. For western blotting, a HRP-conjugated Protein G antibody was used as the secondary antibody (1/5000)

Lane 2: CSB-PA008727LA01HU (8μg) + K562 whole cell lysate (500μg)

Lane 3: K562 whole cell lysate (20μg)