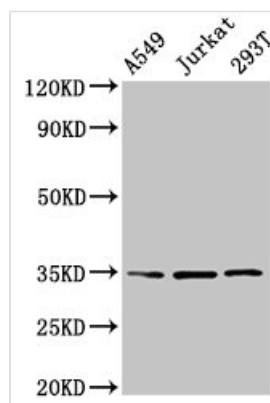




MAGEA3 Antibody

Product Code	CSB-PA013329LA01HU
Storage	Upon receipt, store at -20°C or -80°C. Avoid repeated freeze.
Uniprot No.	P43357
Immunogen	Recombinant Human Melanoma-associated antigen 3 protein (2-104AA)
Raised In	Rabbit
Species Reactivity	Human
Tested Applications	ELISA, WB, IHC; Recommended dilution: WB:1:500-1:5000, IHC:1:200-1:500
Form	Liquid
Conjugate	Non-conjugated
Storage Buffer	Preservative: 0.03% Proclin 300 Constituents: 50% Glycerol, 0.01M PBS, pH 7.4
Purification Method	>95%, Protein G purified
Isotype	IgG
Clonality	Polyclonal
Alias	Melanoma-associated antigen 3 (Antigen MZ2-D) (Cancer/testis antigen 1.3) (CT1.3) (MAGE-3 antigen), MAGEA3, MAGE3
Immunogen Species	Homo sapiens (Human)
Research Area	Tags & Cell Markers
Target Names	MAGEA3

Image



Western Blot

Positive WB detected in: A549 whole cell lysate, Jurkat whole cell lysate, 293T whole cell lysate

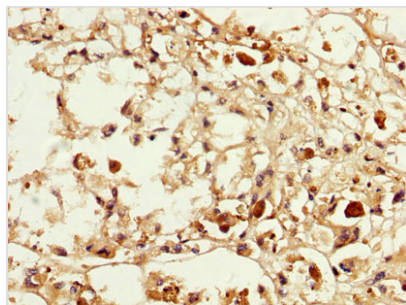
All lanes: MAGEA3 antibody at 4µg/ml

Secondary

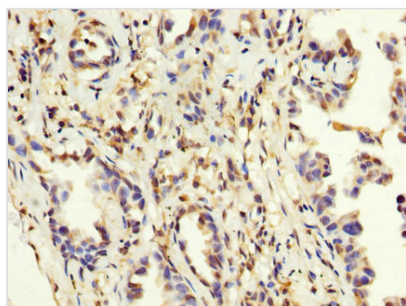
Goat polyclonal to rabbit IgG at 1/50000 dilution

Predicted band size: 35 kDa

Observed band size: 35 kDa



IHC image of CSB-PA013329LA01HU diluted at 1:200 and staining in paraffin-embedded human melanoma performed on a Leica Bond™ system. After dewaxing and hydration, antigen retrieval was mediated by high pressure in a citrate buffer (pH 6.0). Section was blocked with 10% normal goat serum 30min at RT. Then primary antibody (1% BSA) was incubated at 4°C overnight. The primary is detected by a biotinylated secondary antibody and visualized using an HRP conjugated SP system.



IHC image of CSB-PA013329LA01HU diluted at 1:200 and staining in paraffin-embedded human lung cancer performed on a Leica Bond™ system. After dewaxing and hydration, antigen retrieval was mediated by high pressure in a citrate buffer (pH 6.0). Section was blocked with 10% normal goat serum 30min at RT. Then primary antibody (1% BSA) was incubated at 4°C overnight. The primary is detected by a biotinylated secondary antibody and visualized using an HRP conjugated SP system.

Usage

For Research Use Only. Not for use in diagnostic or therapeutic procedures.