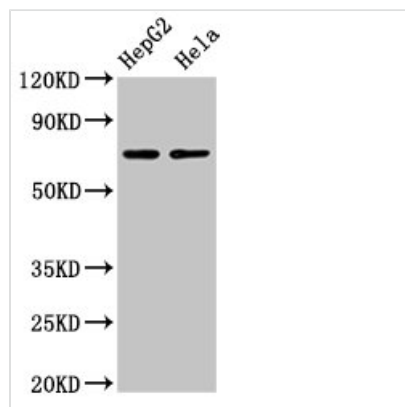




# AMFR Antibody

<b>Product Code</b>	CSB-PA333164LA01HU
<b>Storage</b>	Upon receipt, store at -20°C or -80°C. Avoid repeated freeze.
<b>Uniprot No.</b>	Q9UKV5
<b>Immunogen</b>	Recombinant Human E3 ubiquitin-protein ligase AMFR protein (485-643AA)
<b>Raised In</b>	Rabbit
<b>Species Reactivity</b>	Human
<b>Tested Applications</b>	ELISA, WB, IHC; Recommended dilution: WB:1:500-1:5000, IHC:1:20-1:200
<b>Form</b>	Liquid
<b>Conjugate</b>	Non-conjugated
<b>Storage Buffer</b>	Preservative: 0.03% Proclin 300 Constituents: 50% Glycerol, 0.01M PBS, pH 7.4
<b>Purification Method</b>	>95%, Protein G purified
<b>Isotype</b>	IgG
<b>Clonality</b>	Polyclonal
<b>Alias</b>	E3 ubiquitin-protein ligase AMFR (EC 2.3.2.27) (Autocrine motility factor receptor) (AMF receptor) (RING finger protein 45) (RING-type E3 ubiquitin transferase AMFR) (gp78), AMFR, RNF45
<b>Immunogen Species</b>	Homo sapiens (Human)
<b>Research Area</b>	Cell Biology
<b>Target Names</b>	AMFR

## Image



### Western Blot

Positive WB detected in: HepG2 whole cell lysate, HeLa whole cell lysate

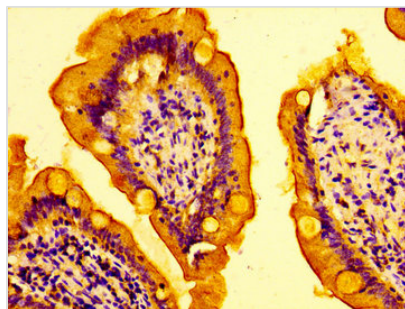
All lanes: AMFR antibody at 4µg/ml

Secondary

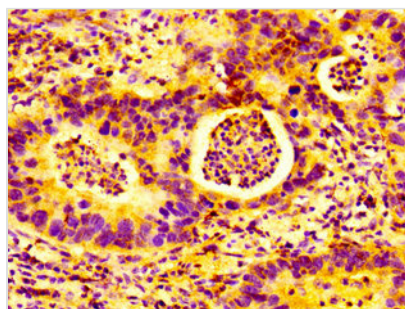
Goat polyclonal to rabbit IgG at 1/50000 dilution

Predicted band size: 73 kDa

Observed band size: 73 kDa



IHC image of CSB-PA333164LA01HU diluted at 1:100 and staining in paraffin-embedded human small intestine tissue performed on a Leica Bond™ system. After dewaxing and hydration, antigen retrieval was mediated by high pressure in a citrate buffer (pH 6.0). Section was blocked with 10% normal goat serum 30min at RT. Then primary antibody (1% BSA) was incubated at 4°C overnight. The primary is detected by a biotinylated secondary antibody and visualized using an HRP conjugated SP system.



IHC image of CSB-PA333164LA01HU diluted at 1:100 and staining in paraffin-embedded human bladder cancer performed on a Leica Bond™ system. After dewaxing and hydration, antigen retrieval was mediated by high pressure in a citrate buffer (pH 6.0). Section was blocked with 10% normal goat serum 30min at RT. Then primary antibody (1% BSA) was incubated at 4°C overnight. The primary is detected by a biotinylated secondary antibody and visualized using an HRP conjugated SP system.

**Usage**

For Research Use Only. Not for use in diagnostic or therapeutic procedures.