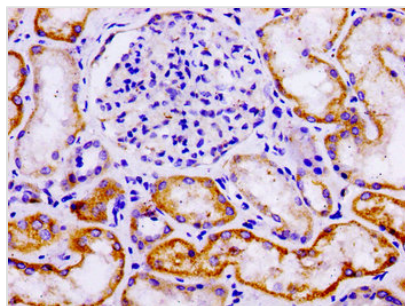




LAMA3 Antibody

Product Code	CSB-PA623096LA01HU
Storage	Upon receipt, store at -20°C or -80°C. Avoid repeated freeze.
Uniprot No.	Q16787
Immunogen	Recombinant Human Laminin subunit alpha-3 protein (1570-1796AA)
Raised In	Rabbit
Species Reactivity	Human
Tested Applications	ELISA, IHC; Recommended dilution: IHC:1:20-1:200
Form	Liquid
Conjugate	Non-conjugated
Storage Buffer	Preservative: 0.03% Proclin 300 Constituents: 50% Glycerol, 0.01M PBS, pH 7.4
Purification Method	>95%, Protein G purified
Isotype	IgG
Clonality	Polyclonal
Alias	Laminin subunit alpha-3 (Epiligrin 170 kDa subunit) (E170) (Epiligrin subunit alpha) (Kalinin subunit alpha) (Laminin-5 subunit alpha) (Laminin-6 subunit alpha) (Laminin-7 subunit alpha) (Nicein subunit alpha), LAMA3, LAMNA
Immunogen Species	Homo sapiens (Human)
Research Area	Cardiovascular
Target Names	LAMA3

Image



IHC image of CSB-PA623096LA01HU diluted at 1:100 and staining in paraffin-embedded human kidney tissue performed on a Leica BondTM system. After dewaxing and hydration, antigen retrieval was mediated by high pressure in a citrate buffer (pH 6.0). Section was blocked with 10% normal goat serum 30min at RT. Then primary antibody (1% BSA) was incubated at 4°C overnight. The primary is detected by a biotinylated secondary antibody and visualized using an HRP conjugated SP system.

Usage

For Research Use Only. Not for use in diagnostic or therapeutic procedures.