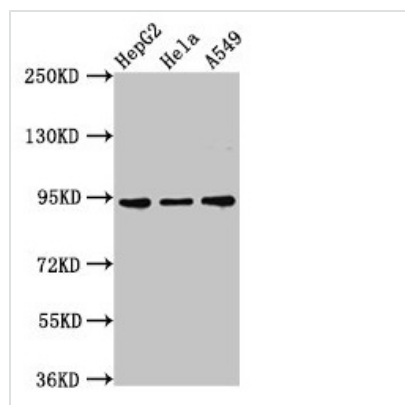




CHD1L Antibody

Product Code	CSB-PA803136LA01HU
Storage	Upon receipt, store at -20°C or -80°C. Avoid repeated freeze.
Uniprot No.	Q86WJ1
Immunogen	Recombinant Human Chromodomain-helicase-DNA-binding protein 1-like protein (704-897AA)
Raised In	Rabbit
Species Reactivity	Human
Tested Applications	ELISA, WB, IF; Recommended dilution: WB:1:500-1:5000, IF:1:200-1:500
Form	Liquid
Conjugate	Non-conjugated
Storage Buffer	Preservative: 0.03% Proclin 300 Constituents: 50% Glycerol, 0.01M PBS, pH 7.4
Purification Method	>95%, Protein G purified
Isotype	IgG
Clonality	Polyclonal
Alias	Chromodomain-helicase-DNA-binding protein 1-like (EC 3.6.4.12) (Amplified in liver cancer protein 1), CHD1L, ALC1
Immunogen Species	Homo sapiens (Human)
Research Area	Epigenetics and Nuclear Signaling
Target Names	CHD1L

Image



Western Blot

Positive WB detected in: HepG2 whole cell lysate, HeLa whole cell lysate, A549 whole cell lysate

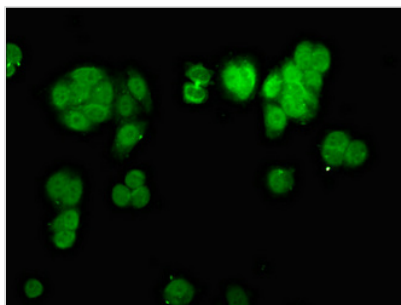
All lanes: CHD1L antibody at 3µg/ml

Secondary

Goat polyclonal to rabbit IgG at 1/50000 dilution

Predicted band size: 101, 91, 78, 89, 70 kDa

Observed band size: 91 kDa



Immunofluorescence staining of HepG2 cells with CSB-PA803136LA01HU at 1:200, counter-stained with DAPI. The cells were fixed in 4% formaldehyde, permeabilized using 0.2% Triton X-100 and blocked in 10% normal Goat Serum. The cells were then incubated with the antibody overnight at 4°C. The secondary antibody was Alexa Fluor 488-conjugated AffiniPure Goat Anti-Rabbit IgG(H+L).