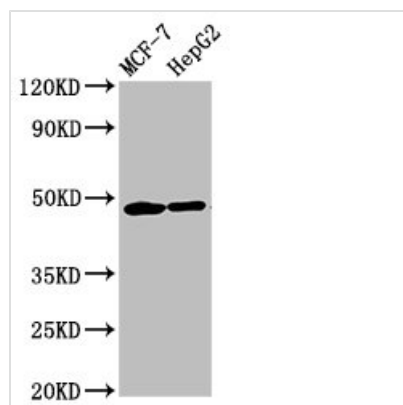




CNNM3 Antibody

Product Code	CSB-PA843333LA01HU
Storage	Upon receipt, store at -20°C or -80°C. Avoid repeated freeze.
Uniprot No.	Q8NE01
Immunogen	Recombinant Human Metal transporter CNNM3 protein (358-645AA)
Raised In	Rabbit
Species Reactivity	Human
Tested Applications	ELISA, WB, IHC, IF; Recommended dilution: WB:1:1000-1:5000, IHC:1:200-1:500, IF:1:50-1:200
Form	Liquid
Conjugate	Non-conjugated
Storage Buffer	Preservative: 0.03% Proclin 300 Constituents: 50% Glycerol, 0.01M PBS, pH 7.4
Purification Method	>95%, Protein G purified
Isotype	IgG
Clonality	Polyclonal
Alias	Metal transporter CNNM3 (Ancient conserved domain-containing protein 3) (Cyclin-M3), CNNM3, ACDP3
Immunogen Species	Homo sapiens (Human)
Research Area	Others
Target Names	CNNM3

Image



Western Blot

Positive WB detected in: MCF-7 whole cell lysate, HepG2 whole cell lysate

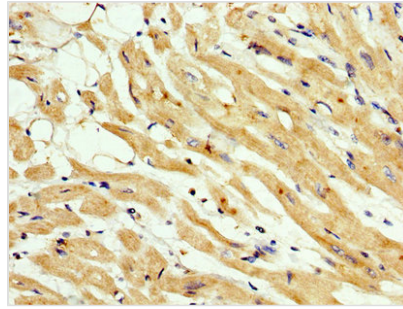
All lanes: CNNM3 antibody at 5.6µg/ml

Secondary

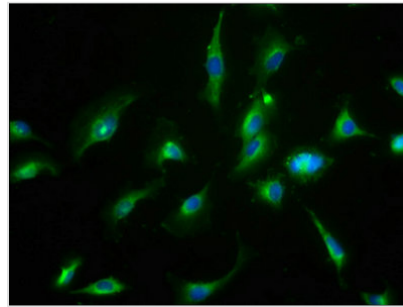
Goat polyclonal to rabbit IgG at 1/50000 dilution

Predicted band size: 77, 71, 74 kDa

Observed band size: 48 kDa



IHC image of CSB-PA843333LA01HU diluted at 1:200 and staining in paraffin-embedded human heart tissue performed on a Leica Bond™ system. After dewaxing and hydration, antigen retrieval was mediated by high pressure in a citrate buffer (pH 6.0). Section was blocked with 10% normal goat serum 30min at RT. Then primary antibody (1% BSA) was incubated at 4°C overnight. The primary is detected by a biotinylated secondary antibody and visualized using an HRP conjugated SP system.



Immunofluorescence staining of U251 cells with CSB-PA843333LA01HU at 1:66, counter-stained with DAPI. The cells were fixed in 4% formaldehyde, permeabilized using 0.2% Triton X-100 and blocked in 10% normal Goat Serum. The cells were then incubated with the antibody overnight at 4°C. The secondary antibody was Alexa Fluor 488-conjugated AffiniPure Goat Anti-Rabbit IgG(H+L).

Usage

For Research Use Only. Not for use in diagnostic or therapeutic procedures.