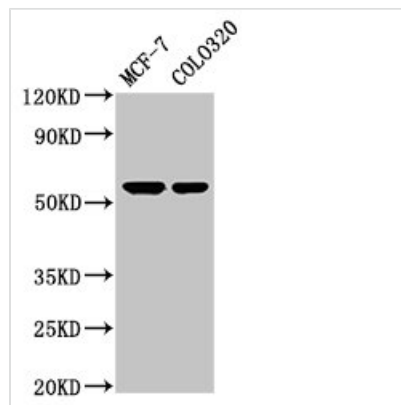




# MYOC Antibody

|                            |   |
|----------------------------|---|
| <b>Product Code</b>        | CSB-PA859950LA01HU  |
| <b>Storage</b>             | Upon receipt, store at -20°C or -80°C. Avoid repeated freeze.   |
| <b>Uniprot No.</b>         | Q99972  |
| <b>Immunogen</b>           | Recombinant Human Myocilin protein (183-294AA)  |
| <b>Raised In</b>           | Rabbit  |
| <b>Species Reactivity</b>  | Human   |
| <b>Tested Applications</b> | ELISA, WB, IHC; Recommended dilution: WB:1:500-1:5000, IHC:1:200-1:500  |
| <b>Form</b>                | Liquid  |
| <b>Conjugate</b>           | Non-conjugated  |
| <b>Storage Buffer</b>      | Preservative: 0.03% Proclin 300<br>Constituents: 50% Glycerol, 0.01M PBS, pH 7.4  |
| <b>Purification Method</b> | >95%, Protein G purified  |
| <b>Isotype</b>             | IgG   |
| <b>Clonality</b>           | Polyclonal  |
| <b>Alias</b>               | Myocilin (Myocilin 55 kDa subunit) (Trabecular meshwork-induced glucocorticoid response protein) [Cleaved into: Myocilin, N-terminal fragment (Myocilin 20 kDa N-terminal fragment); Myocilin, C-terminal fragment (Myocilin 35 kDa N-terminal fragment)], MYOC, GLC1A TIGR |
| <b>Immunogen Species</b>   | Homo sapiens (Human)  |
| <b>Research Area</b>       | Neuroscience  |
| <b>Target Names</b>        | MYOC  |

## Image



### Western Blot

Positive WB detected in: MCF-7 whole cell lysate, Colo320 whole cell lysate

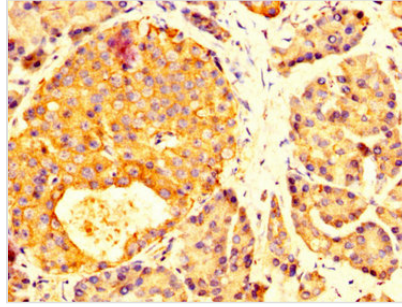
All lanes: MYOC antibody at 5.2µg/ml

Secondary

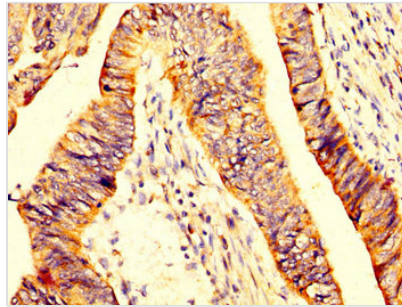
Goat polyclonal to rabbit IgG at 1/50000 dilution

Predicted band size: 57 kDa

Observed band size: 57 kDa



IHC image of CSB-PA859950LA01HU diluted at 1:200 and staining in paraffin-embedded human pancreatic tissue performed on a Leica Bond™ system. After dewaxing and hydration, antigen retrieval was mediated by high pressure in a citrate buffer (pH 6.0). Section was blocked with 10% normal goat serum 30min at RT. Then primary antibody (1% BSA) was incubated at 4°C overnight. The primary is detected by a biotinylated secondary antibody and visualized using an HRP conjugated SP system.



IHC image of CSB-PA859950LA01HU diluted at 1:200 and staining in paraffin-embedded human colon cancer performed on a Leica Bond™ system. After dewaxing and hydration, antigen retrieval was mediated by high pressure in a citrate buffer (pH 6.0). Section was blocked with 10% normal goat serum 30min at RT. Then primary antibody (1% BSA) was incubated at 4°C overnight. The primary is detected by a biotinylated secondary antibody and visualized using an HRP conjugated SP system.