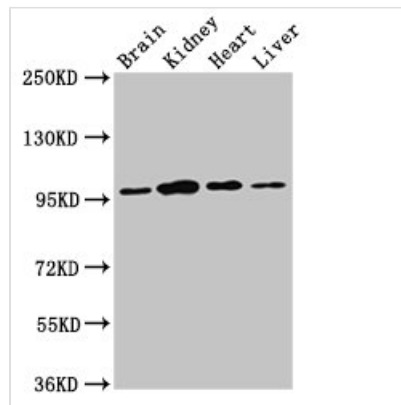




# NAA15 Antibody

<b>Product Code</b>	CSB-PA863143LA01HU
<b>Storage</b>	Upon receipt, store at -20°C or -80°C. Avoid repeated freeze.
<b>Uniprot No.</b>	Q9BXJ9
<b>Immunogen</b>	Recombinant Human N-alpha-acetyltransferase 15, NatA auxiliary subunit protein (742-865AA)
<b>Raised In</b>	Rabbit
<b>Species Reactivity</b>	Human, Rat, Mouse
<b>Tested Applications</b>	ELISA, WB; Recommended dilution: WB:1:500-1:5000
<b>Form</b>	Liquid
<b>Conjugate</b>	Non-conjugated
<b>Storage Buffer</b>	Preservative: 0.03% Proclin 300 Constituents: 50% Glycerol, 0.01M PBS, pH 7.4
<b>Purification Method</b>	>95%, Protein G purified
<b>Isotype</b>	IgG
<b>Clonality</b>	Polyclonal
<b>Alias</b>	N-alpha-acetyltransferase 15, NatA auxiliary subunit (Gastric cancer antigen Ga19) (N-terminal acetyltransferase) (NMDA receptor-regulated protein 1) (Protein tubedown-1) (Tbdn100), NAA15, GA19 NARG1 NATH TBDN100
<b>Immunogen Species</b>	Homo sapiens (Human)
<b>Research Area</b>	Epigenetics and Nuclear Signaling
<b>Target Names</b>	NAA15

## Image



### Western Blot

Positive WB detected in: Rat brain tissue, Rat kidney tissue, Mouse heart tissue, Mouse liver tissue

All lanes: NAA15 antibody at 3µg/ml

Secondary

Goat polyclonal to rabbit IgG at 1/50000 dilution

Predicted band size: 102, 62 kDa

Observed band size: 95 kDa

## Usage

For Research Use Only. Not for use in diagnostic or therapeutic procedures.