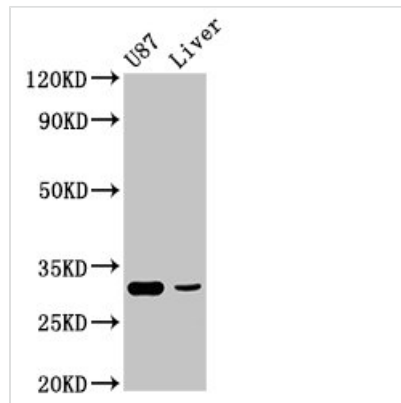




RHCG Antibody

Product Code	CSB-PA880059LA01HU
Storage	Upon receipt, store at -20°C or -80°C. Avoid repeated freeze.
Uniprot No.	Q9UBD6
Immunogen	Recombinant Human Ammonium transporter Rh type C protein (416-479AA)
Raised In	Rabbit
Species Reactivity	Human, Rat
Tested Applications	ELISA, WB, IHC; Recommended dilution: WB:1:500-1:5000, IHC:1:200-1:500
Form	Liquid
Conjugate	Non-conjugated
Storage Buffer	Preservative: 0.03% Proclin 300 Constituents: 50% Glycerol, 0.01M PBS, pH 7.4
Purification Method	>95%, Protein G purified
Isotype	IgG
Clonality	Polyclonal
Alias	Ammonium transporter Rh type C (Rh glycoprotein kidney) (Rhesus blood group family type C glycoprotein) (Rh family type C glycoprotein) (Rh type C glycoprotein) (Tumor-related protein DRC2), RHCG, C15orf6 CDRC2 PDRC2 RHGK
Immunogen Species	Homo sapiens (Human)
Research Area	Signal Transduction
Target Names	RHCG

Image



Western Blot

Positive WB detected in: U87 whole cell lysate, Rat liver tissue

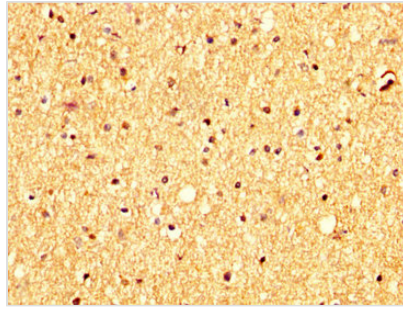
All lanes: ITM2B antibody at 4.9µg/ml

Secondary

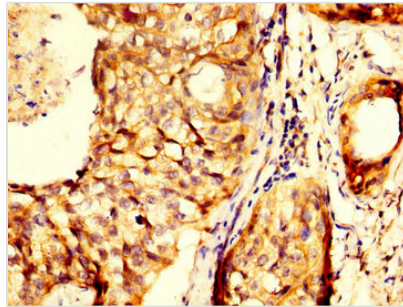
Goat polyclonal to rabbit IgG at 1/50000 dilution

Predicted band size: 54 kDa

Observed band size: 31 kDa



IHC image of CSB-PA880059LA01HU diluted at 1:300 and staining in paraffin-embedded human brain tissue performed on a Leica BondTM system. After dewaxing and hydration, antigen retrieval was mediated by high pressure in a citrate buffer (pH 6.0). Section was blocked with 10% normal goat serum 30min at RT. Then primary antibody (1% BSA) was incubated at 4°C overnight. The primary is detected by a biotinylated secondary antibody and visualized using an HRP conjugated SP system.



IHC image of CSB-PA880059LA01HU diluted at 1:300 and staining in paraffin-embedded human cervical cancer performed on a Leica BondTM system. After dewaxing and hydration, antigen retrieval was mediated by high pressure in a citrate buffer (pH 6.0). Section was blocked with 10% normal goat serum 30min at RT. Then primary antibody (1% BSA) was incubated at 4°C overnight. The primary is detected by a biotinylated secondary antibody and visualized using an HRP conjugated SP system.

Usage

For Research Use Only. Not for use in diagnostic or therapeutic procedures.