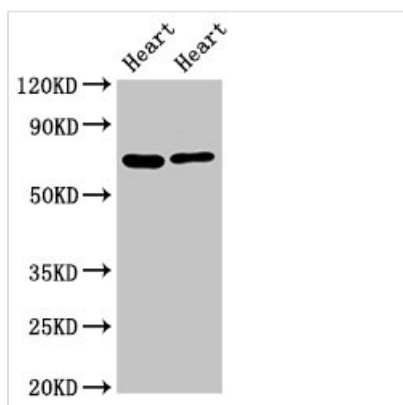




FASTKD2 Antibody

Product Code	CSB-PA882149LA01HU
Storage	Upon receipt, store at -20°C or -80°C. Avoid repeated freeze.
Uniprot No.	Q9NYY8
Immunogen	Recombinant Human FAST kinase domain-containing protein 2, mitochondrial protein (117-203AA)
Raised In	Rabbit
Species Reactivity	Human, Rat, Mouse
Tested Applications	ELISA, WB, IHC; Recommended dilution: WB:1:500-1:5000, IHC:1:100-1:300
Form	Liquid
Conjugate	Non-conjugated
Storage Buffer	Preservative: 0.03% Proclin 300 Constituents: 50% Glycerol, 0.01M PBS, pH 7.4
Purification Method	>95%, Protein G purified
Isotype	IgG
Clonality	Polyclonal
Alias	FAST kinase domain-containing protein 2, mitochondrial, FASTKD2, KIAA0971
Immunogen Species	Homo sapiens (Human)
Research Area	Cell Biology
Target Names	FASTKD2

Image



Western Blot

Positive WB detected in: Rat heart tissue, Mouse heart tissue

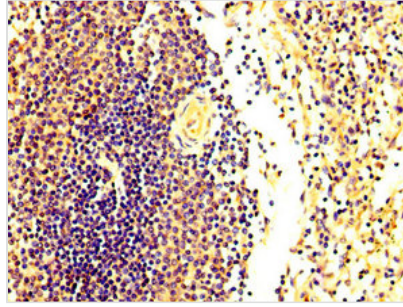
All lanes: FASTKD2 antibody at 8µg/ml

Secondary

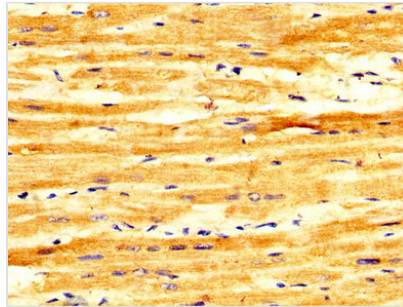
Goat polyclonal to rabbit IgG at 1/50000 dilution

Predicted band size: 82, 75 kDa

Observed band size: 75 kDa



IHC image of CSB-PA882149LA01HU diluted at 1:300 and staining in paraffin-embedded human spleen tissue performed on a Leica Bond™ system. After dewaxing and hydration, antigen retrieval was mediated by high pressure in a citrate buffer (pH 6.0). Section was blocked with 10% normal goat serum 30min at RT. Then primary antibody (1% BSA) was incubated at 4°C overnight. The primary is detected by a biotinylated secondary antibody and visualized using an HRP conjugated SP system.



IHC image of CSB-PA882149LA01HU diluted at 1:300 and staining in paraffin-embedded human heart tissue performed on a Leica Bond™ system. After dewaxing and hydration, antigen retrieval was mediated by high pressure in a citrate buffer (pH 6.0). Section was blocked with 10% normal goat serum 30min at RT. Then primary antibody (1% BSA) was incubated at 4°C overnight. The primary is detected by a biotinylated secondary antibody and visualized using an HRP conjugated SP system.

Usage

For Research Use Only. Not for use in diagnostic or therapeutic procedures.