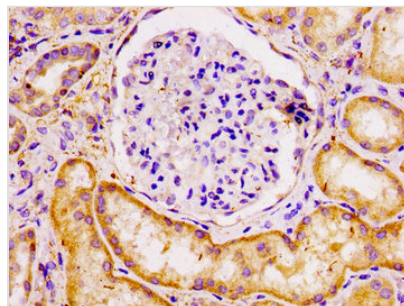




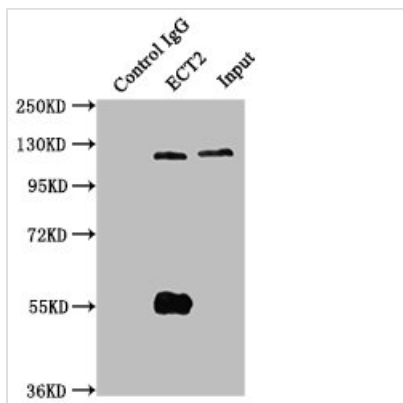
ECT2 Antibody

Product Code	CSB-PA888001LA01HU
Storage	Upon receipt, store at -20°C or -80°C. Avoid repeated freeze.
Uniprot No.	Q9H8V3
Immunogen	Recombinant Human Protein ECT2 protein (283-453AA)
Raised In	Rabbit
Species Reactivity	Human
Tested Applications	ELISA, WB, IHC, IP; Recommended dilution: WB:1:500-1:5000, IHC:1:500-1:1000, IP:1:200-1:2000
Form	Liquid
Conjugate	Non-conjugated
Storage Buffer	Preservative: 0.03% Proclin 300 Constituents: 50% Glycerol, 0.01M PBS, pH 7.4
Purification Method	>95%, Protein G purified
Isotype	IgG
Clonality	Polyclonal
Alias	Protein ECT2 (Epithelial cell-transforming sequence 2 oncogene), ECT2
Immunogen Species	Homo sapiens (Human)
Research Area	Others
Target Names	ECT2

Image



IHC image of CSB-PA888001LA01HU diluted at 1:100 and staining in paraffin-embedded human kidney tissue performed on a Leica Bond™ system. After dewaxing and hydration, antigen retrieval was mediated by high pressure in a citrate buffer (pH 6.0). Section was blocked with 10% normal goat serum 30min at RT. Then primary antibody (1% BSA) was incubated at 4°C overnight. The primary is detected by a biotinylated secondary antibody and visualized using an HRP conjugated SP system.

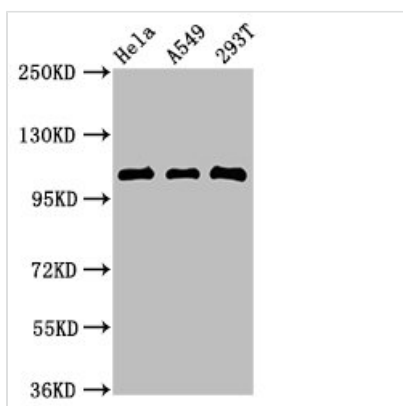


Immunoprecipitating ECT2 in HeLa whole cell lysate

Lane 1: Rabbit control IgG instead of CSB-PA888001LA01HU in HeLa whole cell lysate. For western blotting, a HRP-conjugated Protein G antibody was used as the secondary antibody (1/50000)

Lane 2: CSB-PA888001LA01HU (6 μ g) + HeLa whole cell lysate (1mg)

Lane 3: HeLa whole cell lysate (20 μ g)



Western Blot

Positive WB detected in: HeLa whole cell lysate, A549 whole cell lysate, 293T whole cell lysate

All lanes: ECT2 antibody at 2.7 μ g/ml

Secondary

Goat polyclonal to rabbit IgG at 1/50000 dilution

Predicted band size: 104, 100, 109, 101 kDa

Observed band size: 104 kDa

Usage

For Research Use Only. Not for use in diagnostic or therapeutic procedures.