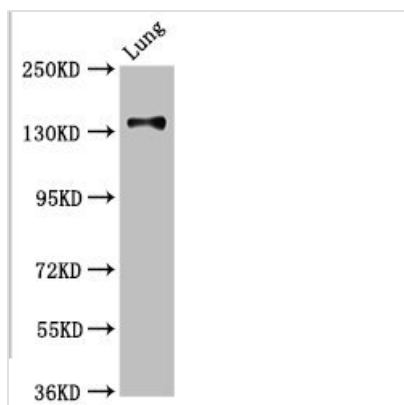




MAN2B2 Antibody

Product Code	CSB-PA896489LA01HU
Storage	Upon receipt, store at -20°C or -80°C. Avoid repeated freeze.
Uniprot No.	Q9Y2E5
Immunogen	Recombinant Human Epididymis-specific alpha-mannosidase protein (347-523AA)
Raised In	Rabbit
Species Reactivity	Human
Tested Applications	ELISA, WB, IHC; Recommended dilution: WB:1:500-1:5000, IHC:1:20-1:200
Form	Liquid
Conjugate	Non-conjugated
Storage Buffer	Preservative: 0.03% Proclin 300 Constituents: 50% Glycerol, 0.01M PBS, pH 7.4
Purification Method	>95%, Protein G purified
Isotype	IgG
Clonality	Polyclonal
Alias	Epididymis-specific alpha-mannosidase (EC 3.2.1.24) (Mannosidase alpha class 2B member 2), MAN2B2, KIAA0935
Immunogen Species	Homo sapiens (Human)
Research Area	Others
Target Names	MAN2B2

Image



Western Blot

Positive WB detected in: Rat kidney tissue

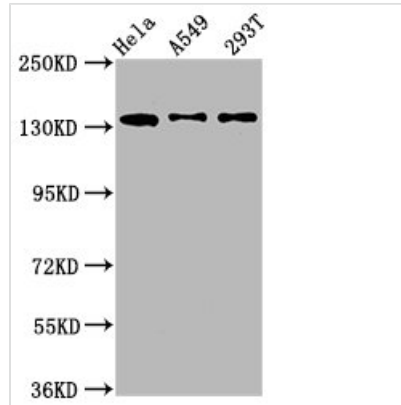
All lanes: MAN2B2 antibody at 3.4µg/ml

Secondary

Goat polyclonal to rabbit IgG at 1/50000 dilution

Predicted band size: 114, 108 kDa

Observed band size: 114 kDa

**Western Blot**

Positive WB detected in: HeLa whole cell lysate, A549 whole cell lysate, 293T whole cell lysate

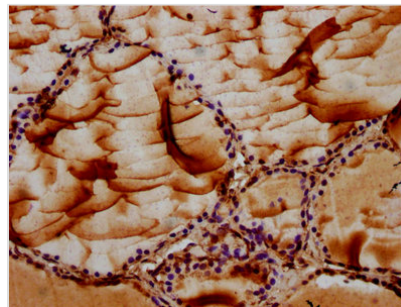
All lanes: MAN2B2 antibody at 1.4µg/ml

Secondary

Goat polyclonal to rabbit IgG at 1/50000 dilution

Predicted band size: 114, 108 kDa

Observed band size: 135 kDa



IHC image of CSB-PA896489LA01HU diluted at 1:100 and staining in paraffin-embedded human thyroid tissue performed on a Leica Bond™ system. After dewaxing and hydration, antigen retrieval was mediated by high pressure in a citrate buffer (pH 6.0). Section was blocked with 10% normal goat serum 30min at RT. Then primary antibody (1% BSA) was incubated at 4°C overnight. The primary is detected by a biotinylated secondary antibody and visualized using an HRP conjugated SP system.

Usage

For Research Use Only. Not for use in diagnostic or therapeutic procedures.