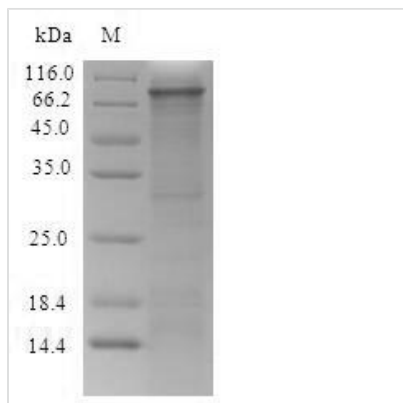




Recombinant Rat Integrin beta-4 (Itgb4), partial

Product Code	CSB-CF727354RAa2
Relevance	Integrin alpha-6/beta-4 is a receptor for laminin. It plays a critical structural role in the hemidesmosome of epithelial cells. Is required for the regulation of keratinocyte polarity and motility. ITGA6:ITGB4 binds to NRG1 (via EGF domain) and this binding is essential for NRG1-ERBB signaling. ITGA6:ITGB4 binds to IGF1 and this binding is essential for IGF1 signaling
Abbreviation	Recombinant Rat Itgb4 protein, partial
Storage	The shelf life is related to many factors, storage state, buffer ingredients, storage temperature and the stability of the protein itself. Generally, the shelf life of liquid form is 6 months at -20°C/-80°C. The shelf life of lyophilized form is 12 months at -20°C/-80°C.
Uniprot No.	Q64632
Product Type	Transmembrane Protein
Immunogen Species	Rattus norvegicus (Rat)
Purity	≥ 85% as determined by SDS-PAGE.
Sequence	SLTENVEEFWDKLGQGERISGNLDAPEGGFDAILQTAVCTRDIGWRADSTHLLV FSTESAFHYEADGANVLAGIMNRNDEKCHLDATGAYTQYKTQDYPSVPTLVRL LAKHNIPIFAVTNYSYSYKELHKYFPVSSLGVLQEDSSNIVELLEEFYRIRSN LDIRALDSPRGLRTEVTSDTLQKTETGFSFIKRGEVGTYNVHLRAVEDIDGTHV CQLAKEDQRGNIHLKPSFSDGLRMDASVICDMCACEIQKEVQSARCHYRGDF MCGHCVCNEGWSGKTCNCSTGSLSDTQPCLREGEDKPCSGHGECQCGRCV CYGEGRYEGHFCEYDNFQCPRTSGFLCNDRGRCSMGECVCEPGWTGRSCD CPLSNATCIDSNGGICNGLGFCECGRCHCNQRSSLYTDTTCEINYSAIRLGLCE DLRSCVQCQAWGTGEKKGRTCEECNFKVKMVDLKKAEVVEYCSFRDEDD DCTYSYTVEGDGSPGPNSTVLVHKKKDCLPAPS
Research Area	Signal Transduction
Source	in vitro E.coli expression system
Target Names	Itgb4
Protein Names	GP150 CD_antigen: CD104
Expression Region	28-713aa
Notes	Repeated freezing and thawing is not recommended. Store working aliquots at 4°C for up to one week.
Tag Info	N-terminal 6xHis-SUMO-tagged
Mol. Weight	92.2 kDa
Protein Length	Extracellular Domain
Image	



(Tris-Glycine gel) Discontinuous SDS-PAGE (reduced) with 5% enrichment gel and 15% separation gel.

Reconstitution

We recommend that this vial be briefly centrifuged prior to opening to bring the contents to the bottom. Please reconstitute protein in deionized sterile water to a concentration of 0.1-1.0 mg/mL. We recommend to add 5-50% of glycerol (final concentration) and aliquot for long-term storage at -20°C/-80°C. Our default final concentration of glycerol is 50%. Customers could use it as reference.

Shelf Life

The shelf life is related to many factors, storage state, buffer ingredients, storage temperature and the stability of the protein itself. Generally, the shelf life of liquid form is 6 months at -20°C/-80°C. The shelf life of lyophilized form is 12 months at -20°C/-80°C.