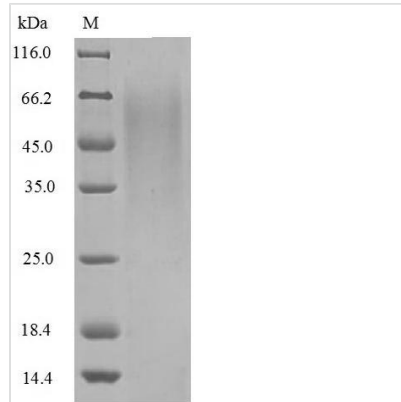




# Recombinant Influenza B virus Non-structural protein 1 (NS)

|                          |   |
|--------------------------|---|
| <b>Product Code</b>      | CSB-YP319433IJU   |
| <b>Relevance</b>         | Binds and inhibits the conjugation of the ubiquitin-like G1P2/ISG15 protein to its target proteins. Since G1P2/ISG15 is an early antiviral protein, NS1 may inhibit the host antiviral response. Prevents EIF2AK2/PKR activation, either by binding double strand RNA or by interacting directly with EIF2AK2/PKR. Also binds poly(A) and U6 snRNA. |
| <b>Abbreviation</b>      | Recombinant Influenza B virus Non-structural protein 1  |
| <b>Storage</b>           | The shelf life is related to many factors, storage state, buffer ingredients, storage temperature and the stability of the protein itself. Generally, the shelf life of liquid form is 6 months at -20°C/-80°C. The shelf life of lyophilized form is 12 months at -20°C/-80°C.   |
| <b>Uniprot No.</b>       | P12600  |
| <b>Product Type</b>      | Recombinant Protein   |
| <b>Immunogen Species</b> | Influenza B virus (strain B/Singapore/222/1979)   |
| <b>Purity</b>            | ≥ 85% as determined by SDS-PAGE.  |
| <b>Sequence</b>          | MAENMTTQTQIEVGPATNATINFEAGILECYERLSWQRALDYPGQDRLNRLKR<br>KLESRIKTHNKSEPESEKMSLEERKAIGVKMMKVLLFMNPSAGIEGFEPYCMK<br>NFSNSNCPNYNWDYPPTPGKCLDDIEEPEENVDDPTEIVLRDMNNKDARQKI<br>KEEVNTQKEGKFRILTIRDIRNVLSLRVLVNGKFLKHPNGYKTLSTLHRLNVYD<br>QSGRLVAKLVATDDLTVEDEEDGHRILNSLFRFNEGHSKPIRAAETA VGVLS<br>QFGQEHRLSPEEGDN  |
| <b>Research Area</b>     | Microbiology  |
| <b>Source</b>            | Yeast   |
| <b>Target Names</b>      | NS  |
| <b>Protein Names</b>     | NS1A  |
| <b>Expression Region</b> | 1-281aa   |
| <b>Notes</b>             | Repeated freezing and thawing is not recommended. Store working aliquots at 4°C for up to one week.   |
| <b>Tag Info</b>          | N-terminal 6xHis-tagged   |
| <b>Mol. Weight</b>       | 34.2 kDa  |
| <b>Protein Length</b>    | Full Length   |
| <b>Image</b>             |   |



(Tris-Glycine gel) Discontinuous SDS-PAGE (reduced) with 5% enrichment gel and 15% separation gel.

**The reducing (R) protein migrates as 65 kDa in SDS-PAGE may be due to glycosylation.**

**Recommended Product**

### Reconstitution

We recommend that this vial be briefly centrifuged prior to opening to bring the contents to the bottom. Please reconstitute protein in deionized sterile water to a concentration of 0.1-1.0 mg/mL. We recommend to add 5-50% of glycerol (final concentration) and aliquot for long-term storage at -20°C/-80°C. Our default final concentration of glycerol is 50%. Customers could use it as reference.

### Shelf Life

The shelf life is related to many factors, storage state, buffer ingredients, storage temperature and the stability of the protein itself.

Generally, the shelf life of liquid form is 6 months at -20°C/-80°C. The shelf life of lyophilized form is 12 months at -20°C/-80°C.