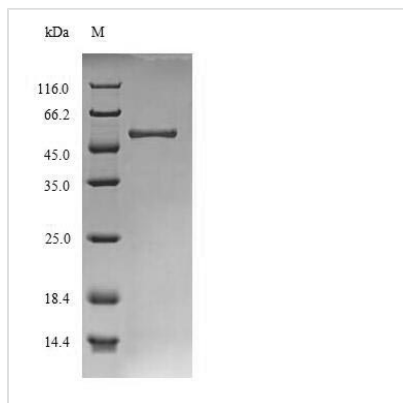




Recombinant *Schizosaccharomyces pombe* Glucan endo-1,3-alpha-glucosidase agn1 (agn1)

Product Code	CSB-EP522580SXVb1
Relevance	Has a role in cell separation where it is required for the degradation of the cell wall material surrounding the septum (the septum edging) which must be hydrolyzed before full separation of the daughter cells can occur. Hydrolyzes 1,3-alpha-glucan predominantly into pentasaccharides.
Abbreviation	Recombinant SchizosaccharoMyces pombe agn1 protein
Storage	The shelf life is related to many factors, storage state, buffer ingredients, storage temperature and the stability of the protein itself. Generally, the shelf life of liquid form is 6 months at -20°C/-80°C. The shelf life of lyophilized form is 12 months at -20°C/-80°C.
Uniprot No.	O13716
Product Type	Recombinant Protein
Immunogen Species	Schizosaccharomyces pombe (strain 972 / ATCC 24843) (Fission yeast)
Purity	≥ 85% as determined by SDS-PAGE.
Sequence	DKMVVAHFIVGNTYPYTVSNWEEDIQDAIavgidgFALNMGSDAWQVERIEDA YDAAASVSSDFKLFISFDMSIISADADFIegVVRRFADKPNQLYYDGKVFVSTFA GETDTFGYSDVSTGWDSAVKEPLASAGYPIYFVPSWTSLGQGALEESVADGF LSWNAWPTTDADMNDNDdigYQNLANSLGKLYVAPVSPWFYTHLSYKNWAY KSDWLIIDRWNEMLSVQPDMIEVLTWNDYGESHYIGNIQGALPAGSEGYVDGF DHTAWRYLMSPYISAYKLGLSEPYINFESLFYWYRPTPKSATATADSLSPSG GDYMEDEIFVLVYLLQSAEVTVTCGSTTQTfSGVPGVnQFTIPMETNASPSFT VARQGGTLASGTGPEIVDSLsiYnFNAYTGVLyF
Research Area	others
Source	E.coli
Target Names	agn1
Protein Names	Endo-1,3-alpha-glucanase agn1
Expression Region	21-424aa
Notes	Repeated freezing and thawing is not recommended. Store working aliquots at 4°C for up to one week.
Tag Info	N-terminal 10xHis-tagged and C-terminal Myc-tagged
Mol. Weight	51.8 kDa
Protein Length	Full Length of Mature Protein
Image	



(Tris-Glycine gel) Discontinuous SDS-PAGE (reduced) with 5% enrichment gel and 15% separation gel.

Reconstitution

We recommend that this vial be briefly centrifuged prior to opening to bring the contents to the bottom. Please reconstitute protein in deionized sterile water to a concentration of 0.1-1.0 mg/mL. We recommend to add 5-50% of glycerol (final concentration) and aliquot for long-term storage at $-20^{\circ}\text{C}/-80^{\circ}\text{C}$. Our default final concentration of glycerol is 50%. Customers could use it as reference.

Shelf Life

The shelf life is related to many factors, storage state, buffer ingredients, storage temperature and the stability of the protein itself. Generally, the shelf life of liquid form is 6 months at $-20^{\circ}\text{C}/-80^{\circ}\text{C}$. The shelf life of lyophilized form is 12 months at $-20^{\circ}\text{C}/-80^{\circ}\text{C}$.