

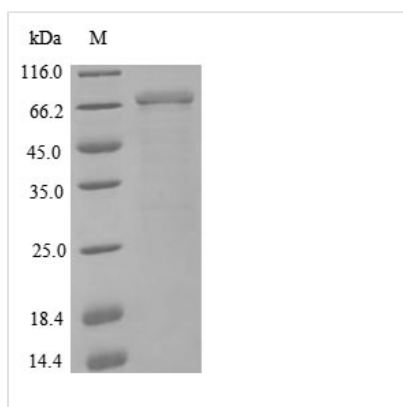


Recombinant Human Neural cell adhesion molecule 1 (NCAM1), partial

Product Code	CSB-EP015511HU1
Relevance	This protein is a cell adhesion molecule involved in neuron-neuron adhesion, neurite fasciculation, outgrowth of neurites, etc. (Microbial infection) Acts as a receptor for rabies virus.
Abbreviation	Recombinant Human NCAM1 protein, partial
Storage	The shelf life is related to many factors, storage state, buffer ingredients, storage temperature and the stability of the protein itself. Generally, the shelf life of liquid form is 6 months at -20°C/-80°C. The shelf life of lyophilized form is 12 months at -20°C/-80°C.
Uniprot No.	P13591
Product Type	Recombinant Protein
Immunogen Species	Homo sapiens (Human)
Purity	Greater than 85% as determined by SDS-PAGE.
Sequence	ISVGESKFFLCQVAGDAKDKDISWFSFNQGEKLTQNPQRISVWVNDSSSTLTIIY NANIDDAGIYKCVVTGEGDSESEATVNVKIFQKLMFKNAPTPQEFREGEDAVIV CDVSSLPPTIIWKHKGRDVILKDKDVRFIVLSNNYLQIRGIKKTDEGTYRCEGRIL ARGEINFKDIQVIVNVPPTIQARQNIIVNATANLGQSVTLVCDAAEGFPEPTMSWT KDGEQIEQEEDDEKYIFSDDSSQLTIKKVDKNDEAEYICIAENKAGEQDATIHLK VFAKPKITYVENQTAMELEEQVTLTCEASGDPIPSITWRTSTRNISSEKTLTG HMMVVRSHARVSSLTLKSIQYTDAGEYICTASNTIGQDSQSMYLEVQYAPKLQG PVAVYTWEGNQVNITCEVFAYPSATISWFRDQQLPSSNYSNIKIYNTPSASYL EVTPDSEDFGNYNCTAVNRIGQESLEFILVQADTPSSPSIDQVEPYSSTAQV QFDEPEATGGVPILKYKAEWRAVGEEVWHSKWYDAKEASMEGIVTIVGLKPE TTYAVRLAALNGKGLGEISAASEFKTQPVQGEPSAPKLEGQMGEDGNSIKVNL IKQDDGGSPIRHVLRVYRALSSEWKPEIRLPSGSDHVMLKSLDWNAEYEVVYV AE
Research Area	Neuroscience
Source	E.coli
Target Names	NCAM1
Protein Names	CD_antigen: CD56 NCAM
Expression Region	31-677aa
Notes	Repeated freezing and thawing is not recommended. Store working aliquots at 4°C for up to one week.
Tag Info	N-terminal 6xHis-tagged
Mol. Weight	75.9 kDa
Protein Length	Partial of isform 2



Image



(Tris-Glycine gel) Discontinuous SDS-PAGE (reduced) with 5% enrichment gel and 15% separation gel.

Reconstitution

We recommend that this vial be briefly centrifuged prior to opening to bring the contents to the bottom. Please reconstitute protein in deionized sterile water to a concentration of 0.1-1.0 mg/mL. We recommend to add 5-50% of glycerol (final concentration) and aliquot for long-term storage at -20°C/-80°C. Our default final concentration of glycerol is 50%. Customers could use it as reference.

Shelf Life

The shelf life is related to many factors, storage state, buffer ingredients, storage temperature and the stability of the protein itself.

Generally, the shelf life of liquid form is 6 months at -20°C/-80°C. The shelf life of lyophilized form is 12 months at -20°C/-80°C.