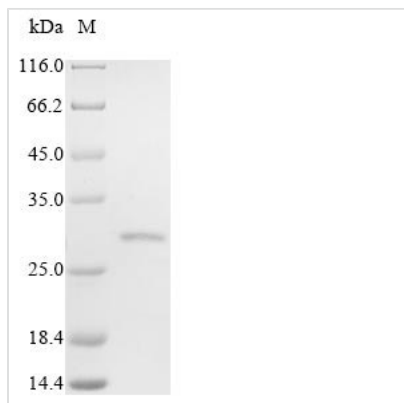




# Recombinant Human Folate receptor beta (FOLR2), partial

<b>Product Code</b>	CSB-BP008786HU1
<b>Relevance</b>	Binds to folate and reduced folic acid derivatives and mediates delivery of 5-methyltetrahydrofolate and folate analogs into the interior of cells. Has high affinity for folate and folic acid analogs at neutral pH. Exposure to slightly acidic pH after receptor endocytosis triggers a conformation change that strongly reduces its affinity for folates and mediates their release.
<b>Abbreviation</b>	Recombinant Human FOLR2 protein, partial
<b>Storage</b>	The shelf life is related to many factors, storage state, buffer ingredients, storage temperature and the stability of the protein itself. Generally, the shelf life of liquid form is 6 months at -20°C/-80°C. The shelf life of lyophilized form is 12 months at -20°C/-80°C.
<b>Uniprot No.</b>	P14207
<b>Product Type</b>	Recombinant Protein
<b>Immunogen Species</b>	Homo sapiens (Human)
<b>Purity</b>	Greater than 85% as determined by SDS-PAGE.
<b>Sequence</b>	CSAQDRTDLLNVCMDAKHHKTKPGPEDKLHDQCSPWKKNACCTASTSQELH KDTSRLYNFNWDHCGKMEPACKRHFIQDTCLYECSPNLGPWIIQQVNSWRK ERFLDVPLCKEDCQRWWEDCHTSHTCKSNWHRGWDWTSQVGNKCPAGALC RTFESYFPTPAALCEGLWSHSYKVSNSYRSGSQRICQMWFDQAQGNPNEEVA RFYAAAMHVN
<b>Research Area</b>	Metabolism
<b>Source</b>	Baculovirus
<b>Target Names</b>	FOLR2
<b>Protein Names</b>	Folate receptor 2 Folate receptor, fetal/placental Placental folate-binding protein
<b>Expression Region</b>	19-230aa
<b>Notes</b>	Repeated freezing and thawing is not recommended. Store working aliquots at 4°C for up to one week.
<b>Tag Info</b>	N-terminal 10xHis-tagged
<b>Mol. Weight</b>	27.1 kDa
<b>Protein Length</b>	Partial
<b>Image</b>	



(Tris-Glycine gel) Discontinuous SDS-PAGE (reduced) with 5% enrichment gel and 15% separation gel.

### Reconstitution

We recommend that this vial be briefly centrifuged prior to opening to bring the contents to the bottom. Please reconstitute protein in deionized sterile water to a concentration of 0.1-1.0 mg/mL. We recommend to add 5-50% of glycerol (final concentration) and aliquot for long-term storage at -20°C/-80°C. Our default final concentration of glycerol is 50%. Customers could use it as reference.

### Shelf Life

The shelf life is related to many factors, storage state, buffer ingredients, storage temperature and the stability of the protein itself. Generally, the shelf life of liquid form is 6 months at -20°C/-80°C. The shelf life of lyophilized form is 12 months at -20°C/-80°C.