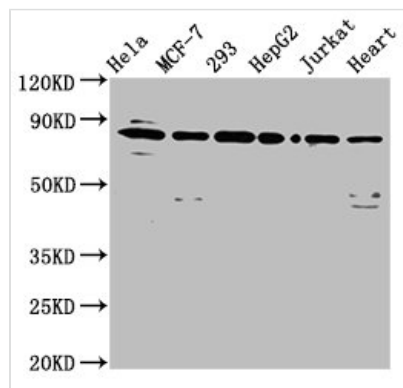




# LETM1 Antibody

|                            |   |
|----------------------------|---|
| <b>Product Code</b>        | CSB-PA012877LA01HU  |
| <b>Storage</b>             | Upon receipt, store at -20°C or -80°C. Avoid repeated freeze.   |
| <b>Uniprot No.</b>         | O95202  |
| <b>Immunogen</b>           | Recombinant Human Mitochondrial proton/calcium exchanger protein (443-543AA)                                      |
| <b>Raised In</b>           | Rabbit  |
| <b>Species Reactivity</b>  | Human, Mouse  |
| <b>Tested Applications</b> | ELISA, WB, IHC, IF; Recommended dilution: WB:1:500-1:5000, IHC:1:200-1:500, IF:1:50-1:200                         |
| <b>Form</b>                | Liquid  |
| <b>Conjugate</b>           | Non-conjugated  |
| <b>Storage Buffer</b>      | Preservative: 0.03% Proclin 300<br>Constituents: 50% Glycerol, 0.01M PBS, pH 7.4                                  |
| <b>Purification Method</b> | >95%, Protein G purified  |
| <b>Isotype</b>             | IgG   |
| <b>Clonality</b>           | Polyclonal  |
| <b>Alias</b>               | Mitochondrial proton/calcium exchanger protein (Leucine zipper-EF-hand-containing transmembrane protein 1), LETM1 |
| <b>Immunogen Species</b>   | Homo sapiens (Human)  |
| <b>Research Area</b>       | Tags & Cell Markers   |
| <b>Target Names</b>        | LETM1   |

## Image



### Western Blot

Positive WB detected in: HeLa whole cell lysate, MCF-7 whole cell lysate, 293 whole cell lysate, HepG2 whole cell lysate, Jurkat whole cell lysate, Mouse heart tissue

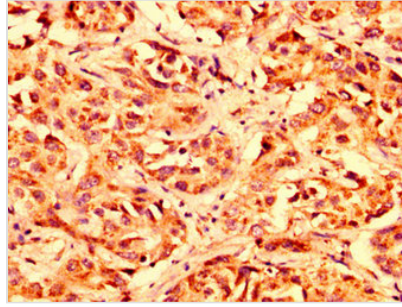
All lanes: LETM1 antibody at 6.5µg/ml

Secondary

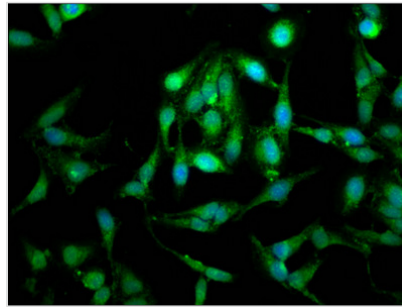
Goat polyclonal to rabbit IgG at 1/50000 dilution

Predicted band size: 84, 30, 34 kDa

Observed band size: 84 kDa



IHC image of CSB-PA012877LA01HU diluted at 1:300 and staining in paraffin-embedded human liver cancer performed on a Leica Bond™ system. After dewaxing and hydration, antigen retrieval was mediated by high pressure in a citrate buffer (pH 6.0). Section was blocked with 10% normal goat serum 30min at RT. Then primary antibody (1% BSA) was incubated at 4°C overnight. The primary is detected by a biotinylated secondary antibody and visualized using an HRP conjugated SP system.



Immunofluorescence staining of HeLa cells with CSB-PA012877LA01HU at 1:100, counter-stained with DAPI. The cells were fixed in 4% formaldehyde, permeabilized using 0.2% Triton X-100 and blocked in 10% normal Goat Serum. The cells were then incubated with the antibody overnight at 4°C. The secondary antibody was Alexa Fluor 488-conjugated AffiniPure Goat Anti-Rabbit IgG(H+L).

## Usage

For Research Use Only. Not for use in diagnostic or therapeutic procedures.