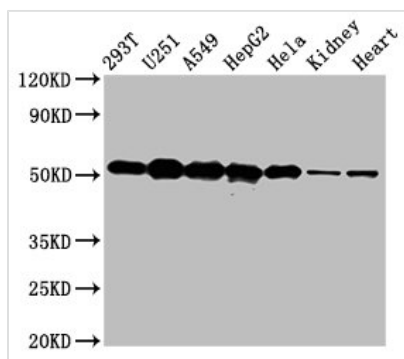




# SLC25A24 Antibody

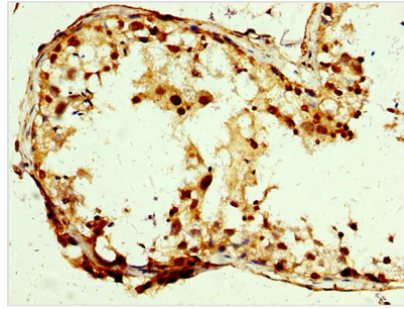
<b>Product Code</b>	CSB-PA743993LA01HU
<b>Storage</b>	Upon receipt, store at -20°C or -80°C. Avoid repeated freeze.
<b>Uniprot No.</b>	Q6NUK1
<b>Immunogen</b>	Recombinant Human Calcium-binding mitochondrial carrier protein SCaMC-1 protein (1-197AA)
<b>Raised In</b>	Rabbit
<b>Species Reactivity</b>	Human, Rat, Mouse
<b>Tested Applications</b>	ELISA, WB, IHC, IF; Recommended dilution: WB:1:500-1:5000, IHC:1:200-1:500, IF:1:50-1:200
<b>Form</b>	Liquid
<b>Conjugate</b>	Non-conjugated
<b>Storage Buffer</b>	Preservative: 0.03% Proclin 300 Constituents: 50% Glycerol, 0.01M PBS, pH 7.4
<b>Purification Method</b>	>95%, Protein G purified
<b>Isotype</b>	IgG
<b>Clonality</b>	Polyclonal
<b>Alias</b>	Calcium-binding mitochondrial carrier protein SCaMC-1 (Mitochondrial ATP-Mg/Pi carrier protein 1) (Mitochondrial Ca(2+)-dependent solute carrier protein 1) (Small calcium-binding mitochondrial carrier protein 1) (Solute carrier family 25 member 24), SLC25A24, APC1 MCSC1 SCAMC1
<b>Immunogen Species</b>	Homo sapiens (Human)
<b>Research Area</b>	Signal Transduction
<b>Target Names</b>	SLC25A24

## Image

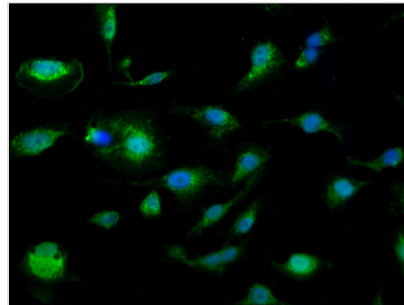


### Western Blot

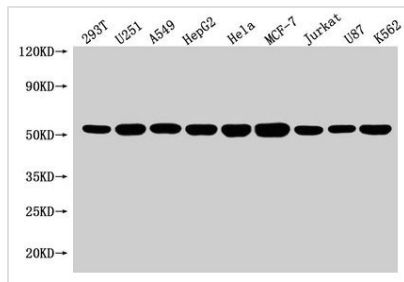
Positive WB detected in: 293T whole cell lysate, U251 whole cell lysate, A549 whole cell lysate, HepG2 whole cell lysate, HeLa whole cell lysate, Rat kidney tissue, Mouse heart tissue  
 All lanes: SLC25A24 antibody at 5µg/ml  
 Secondary  
 Goat polyclonal to rabbit IgG at 1/50000 dilution  
 Predicted band size: 54, 52 kDa  
 Observed band size: 54 kDa



IHC image of CSB-PA743993LA01HU diluted at 1:250 and staining in paraffin-embedded human testis tissue performed on a Leica Bond™ system. After dewaxing and hydration, antigen retrieval was mediated by high pressure in a citrate buffer (pH 6.0). Section was blocked with 10% normal goat serum 30min at RT. Then primary antibody (1% BSA) was incubated at 4°C overnight. The primary is detected by a biotinylated secondary antibody and visualized using an HRP conjugated SP system.



Immunofluorescence staining of U251 cells with CSB-PA743993LA01HU at 1:110, counter-stained with DAPI. The cells were fixed in 4% formaldehyde, permeabilized using 0.2% Triton X-100 and blocked in 10% normal Goat Serum. The cells were then incubated with the antibody overnight at 4°C. The secondary antibody was Alexa Fluor 488-conjugated AffiniPure Goat Anti-Rabbit IgG(H+L).



**Western Blot**

Positive WB detected in: 293T whole cell lysate, U251 whole cell lysate, A549 whole cell lysate, HepG2 whole cell lysate, HeLa whole cell lysate, MCF-7 whole cell lysate, Jurkat whole cell lysate, U87 whole cell lysate, K562 whole cell lysate  
All lanes: SLC25A24 antibody at 1:1500

**Secondary**

Goat polyclonal to rabbit IgG at 1/50000 dilution  
Predicted band size: 54, 52 kDa  
Observed band size: 54 kDa

**Usage**

For Research Use Only. Not for use in diagnostic or therapeutic procedures.