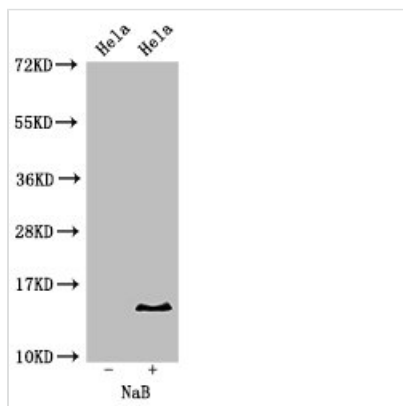




Acetyl-HIST1H2BB (K16) Antibody

Product Code	CSB-PA010402PA16acHU
Storage	Upon receipt, store at -20°C or -80°C. Avoid repeated freeze.
Uniprot No.	P33778
Immunogen	Peptide sequence around site of Acetyl-Lys (16) derived from Human Histone H2B type 1-B
Raised In	Rabbit
Species Reactivity	Human
Tested Applications	ELISA, WB, ICC, IF; Recommended dilution: WB:1:100-1:1000, ICC:1:20-1:200, IF:1:50-1:200
Form	Liquid
Conjugate	Non-conjugated
Storage Buffer	Preservative: 0.03% Proclin 300 Constituents: 50% Glycerol, 0.01M PBS, pH 7.4
Purification Method	Antigen Affinity Purified
Isotype	IgG
Clonality	Polyclonal
Alias	Histone H2B type 1-B (Histone H2B.1) (Histone H2B.f) (H2B/f), HIST1H2BB, H2BFF
Immunogen Species	Homo sapiens (Human)
Research Area	Epigenetics and Nuclear Signaling
Target Names	HIST1H2BB

Image



Western Blot

Positive WB detected in: HeLa cell acid extracts treated by NaB

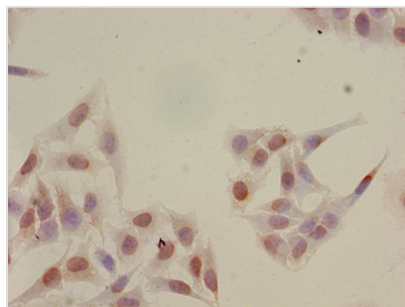
All lanes: HIST1H2BB antibody at 2µg/ml

Secondary

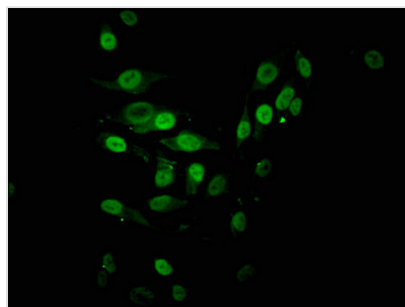
Goat polyclonal to rabbit IgG at 1/50000 dilution

Predicted band size: 14 kDa

Observed band size: 14 kDa



Immunocytochemistry analysis of HeLa cells using CSB-PA010402PA16acHU at dilution of 1:100



Immunofluorescent analysis of HeLa cells using CSB-PA010402PA16acHU at dilution of 1:100 and Alexa Fluor 488-conjugated AffiniPure Goat Anti-Rabbit IgG(H+L)

Usage

For Research Use Only. Not for use in diagnostic or therapeutic procedures.