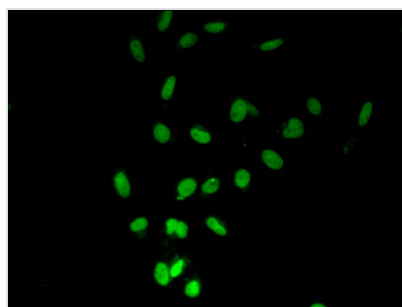




HIST1H2BB (Ab-16) Antibody

Product Code	CSB-PA010402PA16nacHU
Storage	Upon receipt, store at -20°C or -80°C. Avoid repeated freeze.
Uniprot No.	P33778
Immunogen	Peptide sequence around site of Lys (16) derived from Human Histone H2B type 1-B
Raised In	Rabbit
Species Reactivity	Human
Tested Applications	ELISA, IF; Recommended dilution: IF:1:50-1:200
Form	Liquid
Conjugate	Non-conjugated
Storage Buffer	Preservative: 0.03% Proclin 300 Constituents: 50% Glycerol, 0.01M PBS, pH 7.4
Purification Method	Antigen Affinity Purified
Isotype	IgG
Clonality	Polyclonal
Alias	Histone H2B type 1-B (Histone H2B.1) (Histone H2B.f) (H2B/f), HIST1H2BB, H2BFF
Immunogen Species	Homo sapiens (Human)
Research Area	Epigenetics and Nuclear Signaling
Target Names	HIST1H2BB

Image



Immunofluorescent analysis of HeLa cells using CSB-PA010402PA16nacHU at dilution of 1:100 and Alexa Fluor 488-conjugated AffiniPure Goat Anti-Rabbit IgG(H+L)

Usage

For Research Use Only. Not for use in diagnostic or therapeutic procedures.