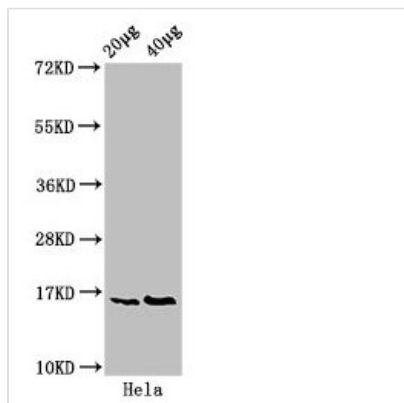




Phospho-HIST1H3A (S10) Antibody

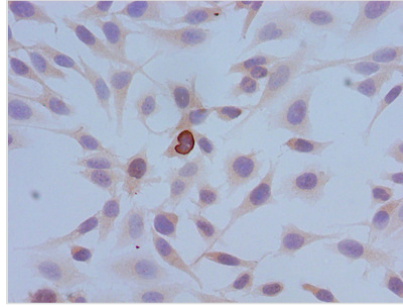
Product Code	CSB-PA010418PA10phHU
Storage	Upon receipt, store at -20°C or -80°C. Avoid repeated freeze.
Uniprot No.	P68431
Immunogen	Peptide sequence around site of Phospho-Ser (10) derived from Human Histone H3.1
Raised In	Rabbit
Species Reactivity	Human
Tested Applications	ELISA, WB, ICC, IP; Recommended dilution: WB:1:200-1:2000, ICC:1:20-1:200, IP:1:200-1:2000
Form	Liquid
Conjugate	Non-conjugated
Storage Buffer	Preservative: 0.03% Proclin 300 Constituents: 50% Glycerol, 0.01M PBS, pH 7.4
Purification Method	Antigen Affinity Purified
Isotype	IgG
Clonality	Polyclonal
Alias	Histone H3.1 (Histone H3/a) (Histone H3/b) (Histone H3/c) (Histone H3/d) (Histone H3/f) (Histone H3/h) (Histone H3/i) (Histone H3/j) (Histone H3/k) (Histone H3/l), HIST1H3A; HIST1H3B; HIST1H3C; HIST1H3D; HIST1H3E; HIST1H3F; HIST1H3G; HIST1H3H; HIST1H3I; HIST1H3J, H3FA; H3FL; H3FC; H3FB; H3FD; H3FI; H3FH; H3FK; H3FF; H3FJ
Immunogen Species	Homo sapiens (Human)
Research Area	Epigenetics and Nuclear Signaling
Target Names	HIST1H3A

Image

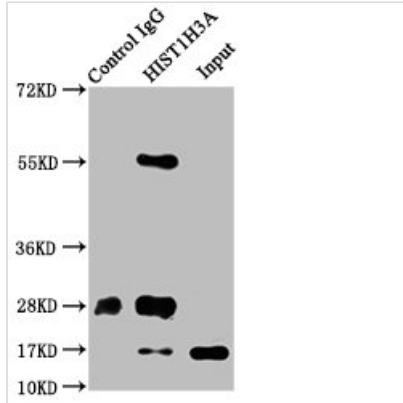


Western Blot

Positive WB detected in: HeLa whole cell lysate
 All lanes: HIST1H3A antibody at 0.4µg/ml
 Secondary
 Goat polyclonal to rabbit IgG at 1/50000 dilution
 Predicted band size: 16 kDa
 Observed band size: 16 kDa



Immunocytochemistry analysis of HeLa cells using CSB-PA010418PA10phHU at dilution of 1:100



Immunoprecipitating HIST1H3A in HeLa whole cell lysate

Lane 1: Rabbit control IgG instead of CSB-PA010418PA10phHU in HeLa whole cell lysate. For western blotting, a HRP-conjugated Protein G antibody was used as the secondary antibody (1/2000)

Lane 2: CSB-PA010418PA10phHU (5µg) + HeLa whole cell lysate (500µg)

Lane 3: HeLa whole cell lysate (20µg)

Usage

For Research Use Only. Not for use in diagnostic or therapeutic procedures.