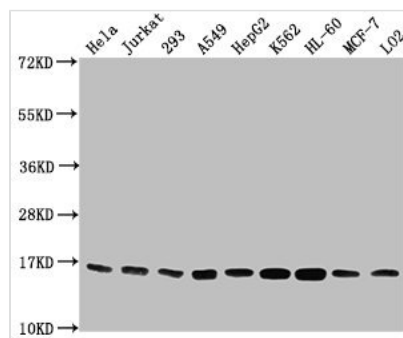




Tri-methyl-HIST1H3A (K4) Antibody

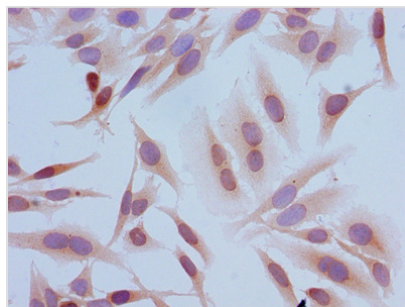
Product Code	CSB-PA010418NA04me3HU
Storage	Upon receipt, store at -20°C or -80°C. Avoid repeated freeze.
Uniprot No.	P68431
Immunogen	Peptide sequence around site of Tri-methyl-Lys (4) derived from Human Histone H3.1
Raised In	Rabbit
Species Reactivity	Human
Tested Applications	ELISA, WB, ICC, IF; Recommended dilution: WB:1:1000-1:5000, ICC:1:20-1:200, IF:1:50-1:200
Form	Liquid
Conjugate	Non-conjugated
Storage Buffer	Preservative: 0.03% Proclin 300 Constituents: 50% Glycerol, 0.01M PBS, pH 7.4
Purification Method	Antigen Affinity Purified
Isotype	IgG
Clonality	Polyclonal
Alias	Histone H3.1 (Histone H3/a) (Histone H3/b) (Histone H3/c) (Histone H3/d) (Histone H3/f) (Histone H3/h) (Histone H3/i) (Histone H3/j) (Histone H3/k) (Histone H3/l), HIST1H3A; HIST1H3B; HIST1H3C; HIST1H3D; HIST1H3E; HIST1H3F; HIST1H3G; HIST1H3H; HIST1H3I; HIST1H3J, H3FA; H3FL; H3FC; H3FB; H3FD; H3FI; H3FH; H3FK; H3FF; H3FJ
Immunogen Species	Homo sapiens (Human)
Research Area	Epigenetics and Nuclear Signaling
Target Names	HIST1H3A

Image

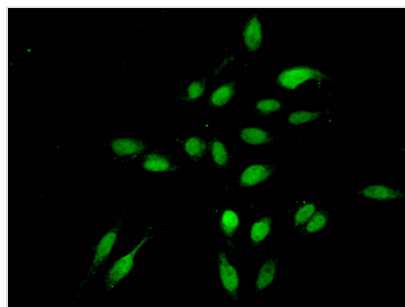


Western Blot

Positive WB detected in: HeLa whole cell lysate, Jurkat whole cell lysate, 293 whole cell lysate, A549 whole cell lysate, HepG2 whole cell lysate, K562 whole cell lysate, HL60 whole cell lysate, MCF-7 whole cell lysate, LO2 whole cell lysate
All lanes: HIST1H3A antibody at 1:2000
Secondary
Goat polyclonal to rabbit IgG at 1/40000 dilution
Predicted band size: 16 kDa
Observed band size: 16 kDa



Immunocytochemistry analysis of HeLa cells using CSB-PA010418NA04me3HU at dilution of 1:100



Immunofluorescent analysis of HeLa cells using CSB-PA010418NA04me3HU at dilution of 1:100 and Alexa Fluor 488-conjugated AffiniPure Goat Anti-Rabbit IgG(H+L)