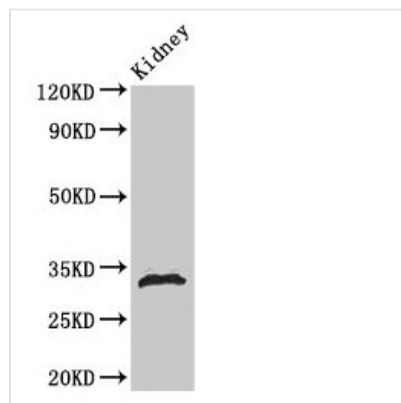




Phospho-HIST1H1B (S188) Antibody

Product Code	CSB-PA010377PA188phHU
Storage	Upon receipt, store at -20°C or -80°C. Avoid repeated freeze.
Uniprot No.	P16401
Immunogen	Peptide sequence around site of Phospho-Ser (188) derived from Human Histone H1.5
Raised In	Rabbit
Species Reactivity	Human, Rat
Tested Applications	ELISA, WB, IF; Recommended dilution: WB:1:100-1:1000, IF:1:50-1:200
Form	Liquid
Conjugate	Non-conjugated
Storage Buffer	Preservative: 0.03% Proclin 300 Constituents: 50% Glycerol, 0.01M PBS, pH 7.4
Purification Method	Antigen Affinity Purified
Isotype	IgG
Clonality	Polyclonal
Alias	Histone H1.5 (Histone H1a) (Histone H1b) (Histone H1s-3), HIST1H1B, H1F5
Immunogen Species	Homo sapiens (Human)
Research Area	Epigenetics and Nuclear Signaling
Target Names	HIST1H1B

Image



Western Blot

Positive WB detected in: Rat kidney tissue

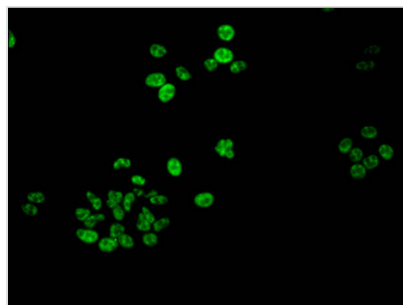
All lanes: HIST1H1B antibody at 1µg/ml

Secondary

Goat polyclonal to rabbit IgG at 1/50000 dilution

Predicted band size: 23 kDa

Observed band size: 32 kDa



Immunofluorescent analysis of HepG2 cells using CSB-PA010377PA188pHU at dilution of 1:100 and Alexa Fluor 488-conjugated AffiniPure Goat Anti-Rabbit IgG(H+L)

Usage

For Research Use Only. Not for use in diagnostic or therapeutic procedures.