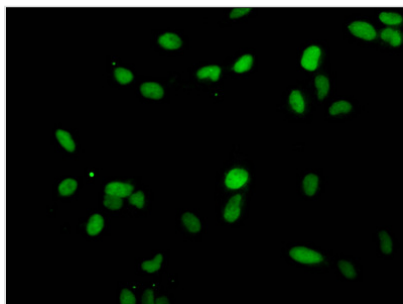




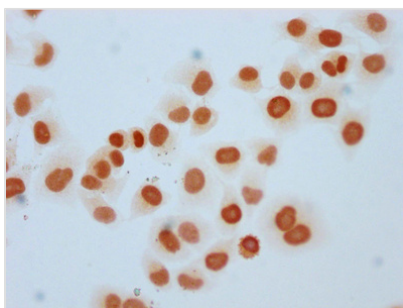
Mono-methyl-HIST1H1E (K25) Antibody

Product Code	CSB-PA010380PA25me1HU
Storage	Upon receipt, store at -20°C or -80°C. Avoid repeated freeze.
Uniprot No.	P10412
Immunogen	Peptide sequence around site of Mono-methyl-Lys (25) derived from Human Histone H1.4
Raised In	Rabbit
Species Reactivity	Human
Tested Applications	ELISA, ICC, IF; Recommended dilution: ICC:1:1-1:10, IF:1:50-1:200
Form	Liquid
Conjugate	Non-conjugated
Storage Buffer	Preservative: 0.03% Proclin 300 Constituents: 50% Glycerol, 0.01M PBS, pH 7.4
Purification Method	Antigen Affinity Purified
Isotype	IgG
Clonality	Polyclonal
Alias	Histone H1.4 (Histone H1b) (Histone H1s-4), HIST1H1E, H1F4
Immunogen Species	Homo sapiens (Human)
Research Area	Epigenetics and Nuclear Signaling
Target Names	HIST1H1E

Image



Immunofluorescent analysis of HeLa cells using CSB-PA010380PA25me1HU at dilution of 1:100 and Alexa Fluor 488-conjugated AffiniPure Goat Anti-Rabbit IgG(H+L)



Immunocytochemistry analysis of CSB-PA010380PA25me1HU diluted at 1:5 and staining in HeLa cells performed on a Leica Bond™ system. The cells were fixed in 4% formaldehyde, permeabilized using 0.2% Triton X-100 and blocked with 10% normal goat serum 30min at RT. Then primary antibody (1% BSA) was incubated at 4°C overnight. The primary is detected by a biotinylated secondary antibody and visualized using an HRP conjugated SP system.

