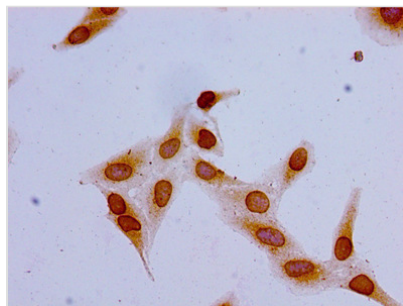




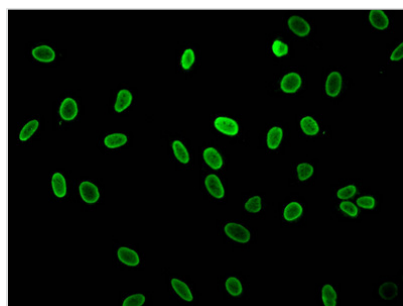
Acetyl-HIST1H1C (K16) Antibody

Product Code	CSB-PA010378PA16acHU
Storage	Upon receipt, store at -20°C or -80°C. Avoid repeated freeze.
Uniprot No.	P16403
Immunogen	Peptide sequence around site of Acetyl-Lys (16) derived from Human Histone H1.2
Raised In	Rabbit
Species Reactivity	Human
Tested Applications	ELISA, ICC, IF, ChIP; Recommended dilution: ICC:1:20-1:200, IF:1:50-1:200
Form	Liquid
Conjugate	Non-conjugated
Storage Buffer	Preservative: 0.03% Proclin 300 Constituents: 50% Glycerol, 0.01M PBS, pH 7.4
Purification Method	Antigen Affinity Purified
Isotype	IgG
Clonality	Polyclonal
Alias	Histone H1.2 (Histone H1c) (Histone H1d) (Histone H1s-1), HIST1H1C, H1F2
Immunogen Species	Homo sapiens (Human)
Research Area	Epigenetics and Nuclear Signaling
Target Names	HIST1H1C

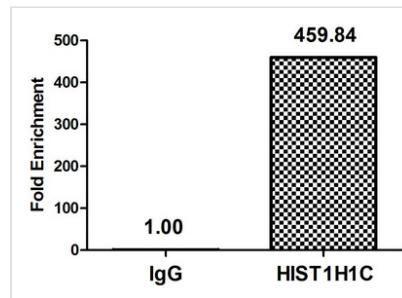
Image



Immunocytochemistry analysis of HeLa cells using CSB-PA010378PA16acHU at dilution of 1:100



Immunofluorescent analysis of HeLa cells (sodium butyrate, 30 mM, 4h) using CSB-PA010378PA16acHU at dilution of 1:100 and Alexa Fluor 488-conjugated AffiniPure Goat Anti-Rabbit IgG(H+L)



Chromatin Immunoprecipitation HeLa (4×10^6 , treated with 30mM sodium butyrate for 4h) were treated with Micrococcal Nuclease, sonicated, and immunoprecipitated with 8 μ g anti-HIST1H1C (CSB-PA010378PA16acHU) or a control normal rabbit IgG. The resulting ChIP DNA was quantified using real-time PCR with primers against the β -Globin promoter.

Usage

For Research Use Only. Not for use in diagnostic or therapeutic procedures.