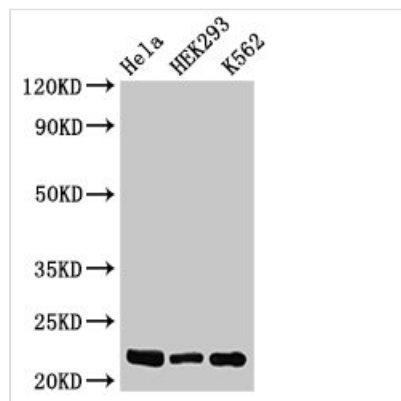




HIST1H1E (Ab-26) Antibody

Product Code	CSB-PA010380PA26nphHU
Storage	Upon receipt, store at -20°C or -80°C. Avoid repeated freeze.
Uniprot No.	P10412
Immunogen	Peptide sequence around site of Ser (26) derived from Human Histone H1.4
Raised In	Rabbit
Species Reactivity	Human
Tested Applications	ELISA, WB, IHC, IF; Recommended dilution: WB:1:100-1:1000, IHC:1:20-1:200, IF:1:50-1:200
Form	Liquid
Conjugate	Non-conjugated
Storage Buffer	Preservative: 0.03% Proclin 300 Constituents: 50% Glycerol, 0.01M PBS, pH 7.4
Purification Method	Antigen Affinity Purified
Isotype	IgG
Clonality	Polyclonal
Alias	Histone H1.4 (Histone H1b) (Histone H1s-4), HIST1H1E, H1F4
Immunogen Species	Homo sapiens (Human)
Research Area	Epigenetics and Nuclear Signaling
Target Names	HIST1H1E

Image



Western Blot

Positive WB detected in: HeLa whole cell lysate, HEK293 whole cell lysate, K562 whole cell lysate

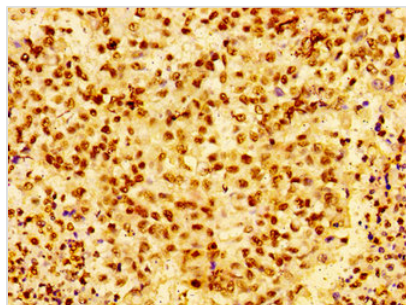
All lanes: HIST1H1E antibody at 0.5µg/ml

Secondary

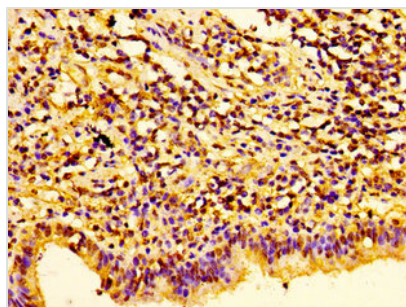
Goat polyclonal to rabbit IgG at 1/50000 dilution

Predicted band size: 22 kDa

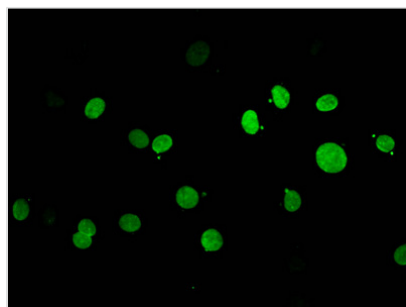
Observed band size: 22 kDa



Immunohistochemistry of paraffin-embedded human colon cancer using CSB-PA010380PA26nphHU at dilution of 1:100



Immunohistochemistry of paraffin-embedded human lung cancer using CSB-PA010380PA26nphHU at dilution of 1:100



Immunofluorescent analysis of MCF-7 cells using CSB-PA010380PA26nphHU at dilution of 1:100 and Alexa Fluor 488-conjugated AffiniPure Goat Anti-Rabbit IgG(H+L)

Usage

For Research Use Only. Not for use in diagnostic or therapeutic procedures.