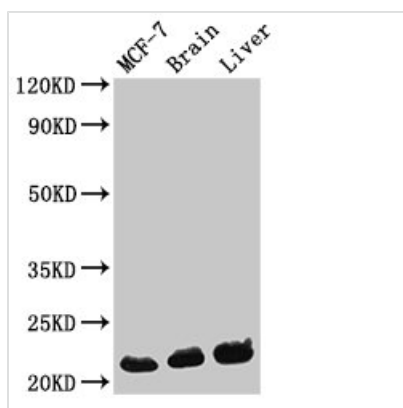




HIST1H1C (Ab-33) Antibody

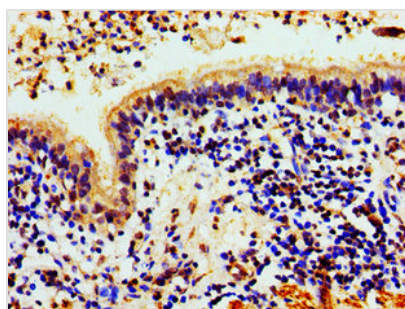
Product Code	CSB-PA010378PA33ncrHU
Storage	Upon receipt, store at -20°C or -80°C. Avoid repeated freeze.
Uniprot No.	P16403
Immunogen	Peptide sequence around site of Lys (33) derived from Human Histone H1.2
Raised In	Rabbit
Species Reactivity	Human, Mouse
Tested Applications	ELISA, WB, IHC; Recommended dilution: WB:1:100-1:1000, IHC:1:20-1:200
Form	Liquid
Conjugate	Non-conjugated
Storage Buffer	Preservative: 0.03% Proclin 300 Constituents: 50% Glycerol, 0.01M PBS, pH 7.4
Purification Method	Antigen Affinity Purified
Isotype	IgG
Clonality	Polyclonal
Alias	Histone H1.2 (Histone H1c) (Histone H1d) (Histone H1s-1), HIST1H1C, H1F2
Immunogen Species	Homo sapiens (Human)
Research Area	Epigenetics and Nuclear Signaling
Target Names	HIST1H1C

Image



Western Blot

Positive WB detected in: MCF-7 whole cell lysate, Mouse brain tissue, Mouse liver tissue
 All lanes: HIST1H1C antibody at 0.3µg/ml
 Secondary
 Goat polyclonal to rabbit IgG at 1/50000 dilution
 Predicted band size: 22 kDa
 Observed band size: 22 kDa



Immunohistochemistry of paraffin-embedded human lung cancer using CSB-PA010378PA33ncrHU at dilution of 1:100



Usage

For Research Use Only. Not for use in diagnostic or therapeutic procedures.