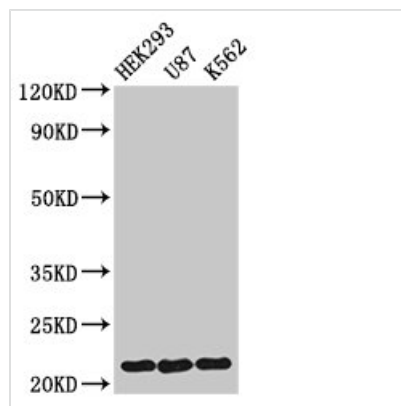




# HIST1H1E (Ab-62) Antibody

<b>Product Code</b>	CSB-PA010380PA62nforHU
<b>Storage</b>	Upon receipt, store at -20°C or -80°C. Avoid repeated freeze.
<b>Uniprot No.</b>	P10412
<b>Immunogen</b>	Peptide sequence around site of Lys (62) derived from Human Histone H1.4
<b>Raised In</b>	Rabbit
<b>Species Reactivity</b>	Human
<b>Tested Applications</b>	ELISA, WB, IHC; Recommended dilution: WB:1:200-1:2000, IHC:1:20-1:200
<b>Form</b>	Liquid
<b>Conjugate</b>	Non-conjugated
<b>Storage Buffer</b>	Preservative: 0.03% Proclin 300 Constituents: 50% Glycerol, 0.01M PBS, pH 7.4
<b>Purification Method</b>	Antigen Affinity Purified
<b>Isotype</b>	IgG
<b>Clonality</b>	Polyclonal
<b>Alias</b>	Histone H1.4 (Histone H1b) (Histone H1s-4), HIST1H1E, H1F4
<b>Immunogen Species</b>	Homo sapiens (Human)
<b>Research Area</b>	Epigenetics and Nuclear Signaling
<b>Target Names</b>	HIST1H1E

## Image



### Western Blot

Positive WB detected in: HEK293 whole cell lysate, U87 whole cell lysate, K562 whole cell lysate

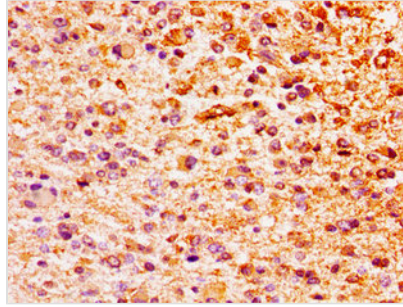
All lanes: HIST1H1E antibody at 1.5µg/ml

Secondary

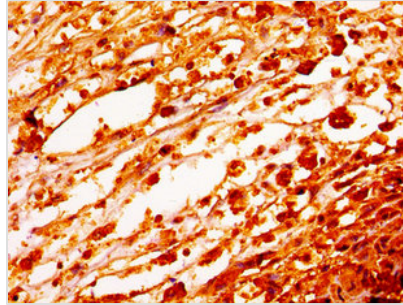
Goat polyclonal to rabbit IgG at 1/50000 dilution

Predicted band size: 22 kDa

Observed band size: 22 kDa



Immunohistochemistry of paraffin-embedded human glioma using CSB-PA010380PA62nforHU at dilution of 1:100



Immunohistochemistry of paraffin-embedded human melanoma using CSB-PA010380PA62nforHU at dilution of 1:100

## Usage

For Research Use Only. Not for use in diagnostic or therapeutic procedures.