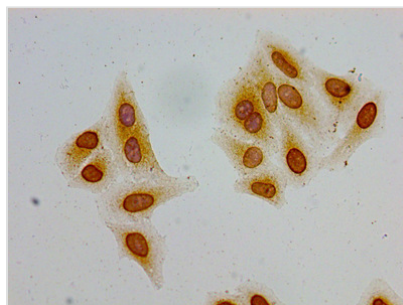




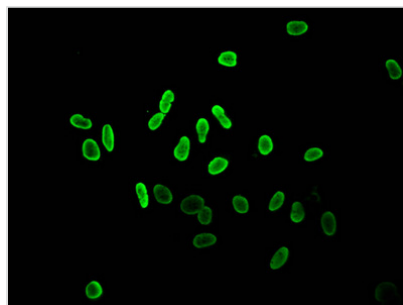
Acetyl-HIST1H2AG (K36) Antibody

Product Code	CSB-PA010389PA36acHU
Storage	Upon receipt, store at -20°C or -80°C. Avoid repeated freeze.
Uniprot No.	P0C0S8
Immunogen	Peptide sequence around site of Acetyl-Lys (36) derived from Human Histone H2A type 1
Raised In	Rabbit
Species Reactivity	Human
Tested Applications	ELISA, WB, ICC, IF, ChIP; Recommended dilution: WB:1:200-1:2000, ICC:1:20-1:200, IF:1:50-1:200
Form	Liquid
Conjugate	Non-conjugated
Storage Buffer	Preservative: 0.03% Proclin 300 Constituents: 50% Glycerol, 0.01M PBS, pH 7.4
Purification Method	Antigen Affinity Purified
Isotype	IgG
Clonality	Polyclonal
Alias	Histone H2A type 1 (H2A.1) (Histone H2A/ptl), HIST1H2AG; HIST1H2AI; HIST1H2AK; HIST1H2AL; HIST1H2AM, H2AFP; H2AFC; H2AFD; H2AFI; H2AFN
Immunogen Species	Homo sapiens (Human)
Research Area	Epigenetics and Nuclear Signaling
Target Names	HIST1H2AG

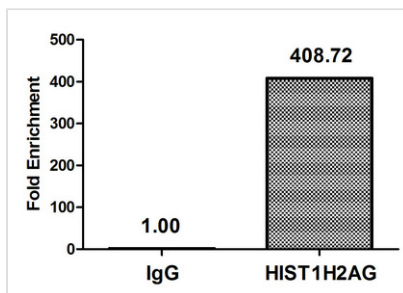
Image



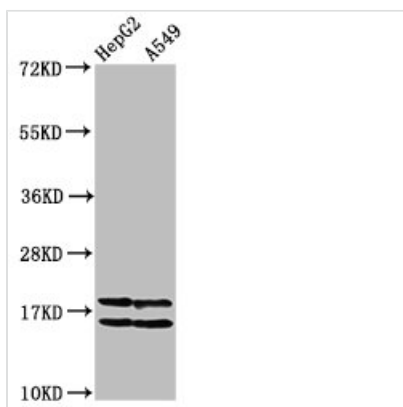
Immunocytochemistry analysis of HeLa cells using CSB-PA010389PA36acHU at dilution of 1:100



Immunofluorescent analysis of HeLa cells (sodium butyrate, 30 mM, 4h) using CSB-PA010389PA36acHU at dilution of 1:100 and Alexa Fluor 488-conjugated AffiniPure Goat Anti-Rabbit IgG(H+L)



Chromatin Immunoprecipitation HeLa (4×10^6 , treated with 30mM sodium butyrate for 4h) were treated with Micrococcal Nuclease, sonicated, and immunoprecipitated with 8 μ g anti-HIST1H2AG (CSB-PA010389PA36acHU) or a control normal rabbit IgG. The resulting ChIP DNA was quantified using real-time PCR with primers against the β -Globin promoter.



Western Blot

Positive WB detected in: HepG2 whole cell lysate, A549 whole cell lysate (All treated with 30mM sodium butyrate for 4h)

All lanes: HIST1H2AG antibody at 1 μ g/ml

Secondary

Goat polyclonal to rabbit IgG at 1/50000 dilution

Predicted band size: 15 kDa

Observed band size: 15 kDa