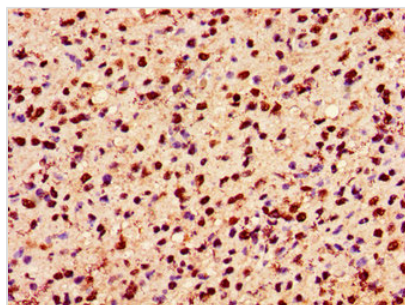




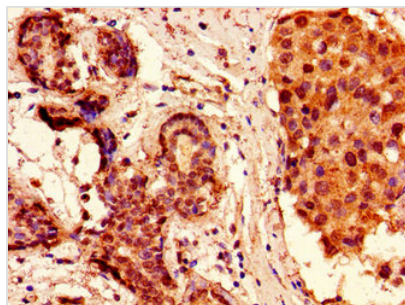
HIST1H2AG (Ab-36) Antibody

Product Code	CSB-PA010389PA36ncrHU
Storage	Upon receipt, store at -20°C or -80°C. Avoid repeated freeze.
Uniprot No.	P0C0S8
Immunogen	Peptide sequence around site of Lys (36) derived from Human Histone H2A type 1
Raised In	Rabbit
Species Reactivity	Human
Tested Applications	ELISA, IHC, IF; Recommended dilution: IHC:1:20-1:200, IF:1:50-1:200
Form	Liquid
Conjugate	Non-conjugated
Storage Buffer	Preservative: 0.03% Proclin 300 Constituents: 50% Glycerol, 0.01M PBS, pH 7.4
Purification Method	Antigen Affinity Purified
Isotype	IgG
Clonality	Polyclonal
Alias	Histone H2A type 1 (H2A.1) (Histone H2A/ptl), HIST1H2AG; HIST1H2AI; HIST1H2AK; HIST1H2AL; HIST1H2AM, H2AFP; H2AFC; H2AFD; H2AFI; H2AFN
Immunogen Species	Homo sapiens (Human)
Research Area	Epigenetics and Nuclear Signaling
Target Names	HIST1H2AG

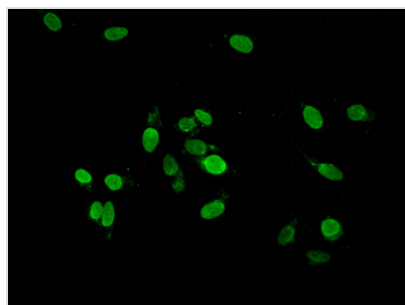
Image



Immunohistochemistry of paraffin-embedded human glioma using CSB-PA010389PA36ncrHU at dilution of 1:100



Immunohistochemistry of paraffin-embedded human breast cancer using CSB-PA010389PA36ncrHU at dilution of 1:100



Immunofluorescent analysis of HeLa cells using CSB-PA010389PA36ncrHU at dilution of 1:100 and Alexa Fluor 488-conjugated AffiniPure Goat Anti-Rabbit IgG(H+L)