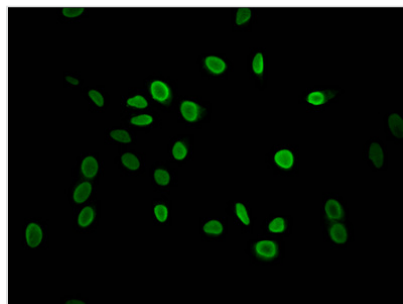




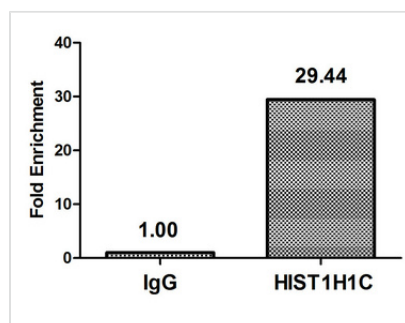
Mono-methyl-HIST1H1C (K118) Antibody

| | |
|----------------------------|---|
| Product Code | CSB-PA010378PA118me1HU |
| Storage | Upon receipt, store at -20°C or -80°C. Avoid repeated freeze. |
| Uniprot No. | P16403 |
| Immunogen | Peptide sequence around site of Mono-methyl-Lys (118) derived from Human Histone H1.2 |
| Raised In | Rabbit |
| Species Reactivity | Human |
| Tested Applications | ELISA, IF, ChIP; Recommended dilution: IF:1:50-1:200 |
| Form | Liquid |
| Conjugate | Non-conjugated |
| Storage Buffer | Preservative: 0.03% Proclin 300 Constituents: 50% Glycerol, 0.01M PBS, pH 7.4 |
| Purification Method | Antigen Affinity Purified |
| Isotype | IgG |
| Clonality | Polyclonal |
| Alias | Histone H1.2 (Histone H1c) (Histone H1d) (Histone H1s-1), HIST1H1C, H1F2 |
| Immunogen Species | Homo sapiens (Human) |
| Research Area | Epigenetics and Nuclear Signaling |
| Target Names | HIST1H1C |

Image



Immunofluorescent analysis of HeLa cells using CSB-PA010378PA118me1HU at dilution of 1:100 and Alexa Fluor 488-conjugated AffiniPure Goat Anti-Rabbit IgG(H+L)



Chromatin Immunoprecipitation HeLa (4×10^6) were treated with Micrococcal Nuclease, sonicated, and immunoprecipitated with 5µg anti-HIST1H1C (CSB-PA010378PA118me1HU) or a control normal rabbit IgG. The resulting ChIP DNA was quantified using real-time PCR with primers against the β -Globin promoter.



Usage

For Research Use Only. Not for use in diagnostic or therapeutic procedures.