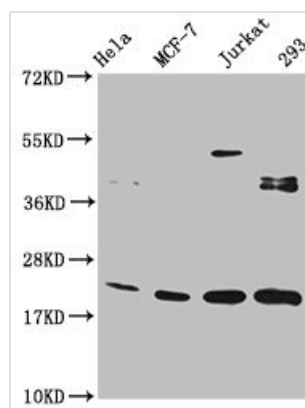




HIST1H1C (Ab-186) Antibody

Product Code	CSB-PA010378PA186nme1HU
Storage	Upon receipt, store at -20°C or -80°C. Avoid repeated freeze.
Uniprot No.	P16403
Immunogen	Peptide sequence around site of Lys (186) derived from Human Histone H1.2
Raised In	Rabbit
Species Reactivity	Human
Tested Applications	ELISA, WB, IP; Recommended dilution: WB:1:100-1:1000, IP:1:200-1:2000
Form	Liquid
Conjugate	Non-conjugated
Storage Buffer	Preservative: 0.03% Proclin 300 Constituents: 50% Glycerol, 0.01M PBS, pH 7.4
Purification Method	Antigen Affinity Purified
Isotype	IgG
Clonality	Polyclonal
Alias	Histone H1.2 (Histone H1c) (Histone H1d) (Histone H1s-1), HIST1H1C, H1F2
Immunogen Species	Homo sapiens (Human)
Research Area	Epigenetics and Nuclear Signaling
Target Names	HIST1H1C

Image



Western Blot

Positive WB detected in: HeLa whole cell lysate, MCF-7 whole cell lysate, Jurkat whole cell lysate, 293 whole cell lysate

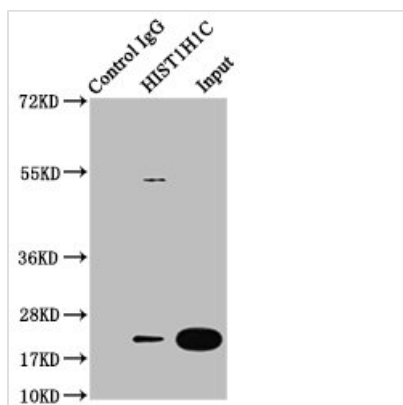
All lanes: HIST1H1C antibody at 1:100

Secondary

Goat polyclonal to rabbit IgG at 1/50000 dilution

Predicted band size: 22 kDa

Observed band size: 22 kDa



Immunoprecipitating HIST1H1C in 293 whole cell lysate

Lane 1: Rabbit control IgG instead of CSB-PA010378PA186nme1HU in 293 whole cell lysate. For western blotting, a HRP-conjugated Protein G antibody was used as the secondary antibody (1/2000)

Lane 2: CSB-PA010378PA186nme1HU (5µg) + 293 whole cell lysate (500µg)

Lane 3: 293 whole cell lysate (20µg)