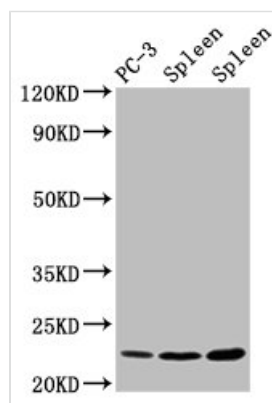




# HIST1H1D (Ab-146) Antibody

<b>Product Code</b>	CSB-PA010379PA146nphHU
<b>Storage</b>	Upon receipt, store at -20°C or -80°C. Avoid repeated freeze.
<b>Uniprot No.</b>	P16402
<b>Immunogen</b>	Peptide sequence around site of Thr (146) derived from Human Histone H1.3
<b>Raised In</b>	Rabbit
<b>Species Reactivity</b>	Human, Mouse, Rat
<b>Tested Applications</b>	ELISA, WB, IHC, IF; Recommended dilution: WB:1:200-1:2000, IHC:1:20-1:200, IF:1:50-1:200
<b>Form</b>	Liquid
<b>Conjugate</b>	Non-conjugated
<b>Storage Buffer</b>	Preservative: 0.03% Proclin 300 Constituents: 50% Glycerol, 0.01M PBS, pH 7.4
<b>Purification Method</b>	Antigen Affinity Purified
<b>Isotype</b>	IgG
<b>Clonality</b>	Polyclonal
<b>Alias</b>	Histone H1.3 (Histone H1c) (Histone H1s-2), HIST1H1D, H1F3
<b>Immunogen Species</b>	Homo sapiens (Human)
<b>Research Area</b>	Epigenetics and Nuclear Signaling
<b>Target Names</b>	HIST1H1D

## Image



### Western Blot

Positive WB detected in: PC-3 whole cell lysate, Rat spleen tissue, Mouse spleen tissue

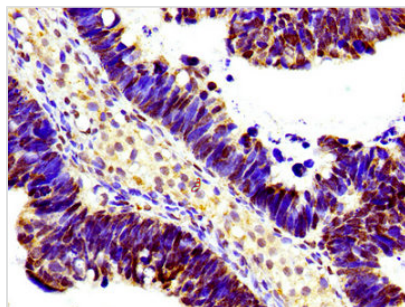
All lanes: HIST1H1D antibody at 1.5µg/ml

Secondary

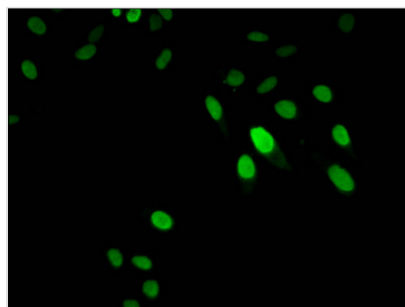
Goat polyclonal to rabbit IgG at 1/50000 dilution

Predicted band size: 23 kDa

Observed band size: 23 kDa



Immunohistochemistry of paraffin-embedded human ovarian cancer using CSB-PA010379PA146nphHU at dilution of 1:100



Immunofluorescent analysis of HeLa cells using CSB-PA010379PA146nphHU at dilution of 1:100 and Alexa Fluor 488-conjugated AffiniPure Goat Anti-Rabbit IgG(H+L)