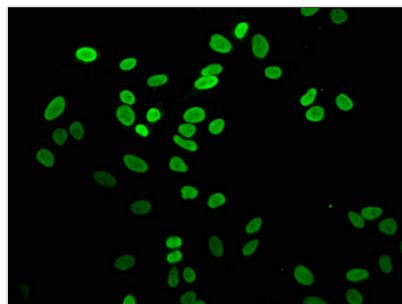




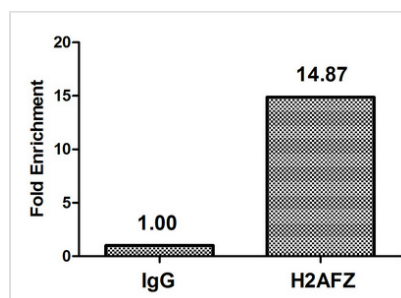
# Mono-methyl-H2AFZ (K4) Antibody

<b>Product Code</b>	CSB-PA010100OA04me1HU
<b>Storage</b>	Upon receipt, store at -20°C or -80°C. Avoid repeated freeze.
<b>Uniprot No.</b>	P0C0S5
<b>Immunogen</b>	Peptide sequence around site of Mono-methyl-Lys (4) derived from Human Histone H2A.Z
<b>Raised In</b>	Rabbit
<b>Species Reactivity</b>	Human
<b>Tested Applications</b>	ELISA, ICC, IF, ChIP; Recommended dilution: ICC:1:1-1:10, IF:1:1-1:10
<b>Form</b>	Liquid
<b>Conjugate</b>	Non-conjugated
<b>Storage Buffer</b>	Preservative: 0.03% Proclin 300 Constituents: 50% Glycerol, 0.01M PBS, pH 7.4
<b>Purification Method</b>	Antigen Affinity Purified
<b>Isotype</b>	IgG
<b>Clonality</b>	Polyclonal
<b>Alias</b>	Histone H2A.Z (H2A/z), H2AFZ, H2AZ
<b>Immunogen Species</b>	Homo sapiens (Human)
<b>Research Area</b>	Epigenetics and Nuclear Signaling
<b>Target Names</b>	H2AFZ

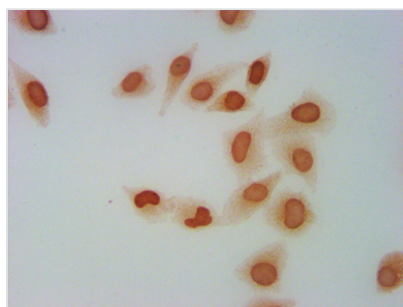
## Image



Immunofluorescence staining of HeLa cells with CSB-PA010100OA04me1HU at 1:5, counter-stained with DAPI. The cells were fixed in 4% formaldehyde, permeabilized using 0.2% Triton X-100 and blocked in 10% normal Goat Serum. The cells were then incubated with the antibody overnight at 4°C. The secondary antibody was Alexa Fluor 488-conjugated AffiniPure Goat Anti-Rabbit IgG(H+L).



Chromatin Immunoprecipitation HeLa ( $4 \times 10^6$ ) were treated with Micrococcal Nuclease, sonicated, and immunoprecipitated with 5µg anti-H2AFZ (CSB-PA010100OA04me1HU) or a control normal rabbit IgG. The resulting ChIP DNA was quantified using real-time PCR with primers against the  $\beta$ -Globin promoter.



Immunocytochemistry analysis of CSB-PA010100OA04me1HU diluted at 1:5 and staining in Hela cells performed on a Leica Bond™ system. The cells were fixed in 4% formaldehyde, permeabilized using 0.2% Triton X-100 and blocked with 10% normal goat serum 30min at RT. Then primary antibody (1% BSA) was incubated at 4°C overnight. The primary is detected by a biotinylated secondary antibody and visualized using an HRP conjugated SP system.